

Supplementary Material

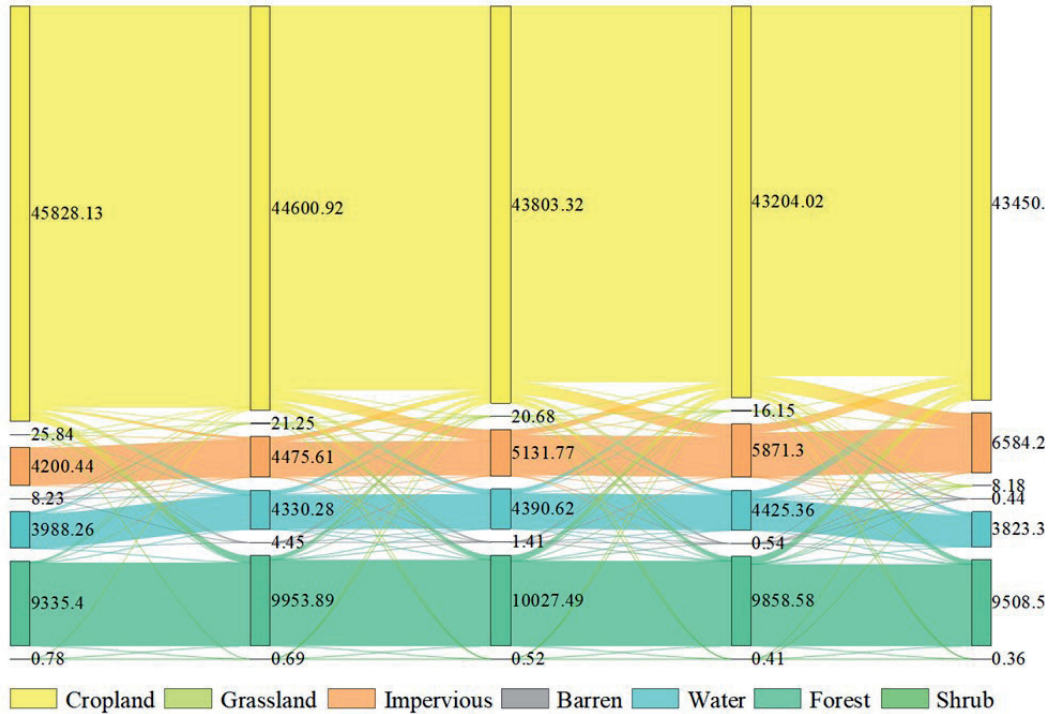


Fig. S1. Land use transfer Sankey map of the Hefei Metropolitan Area from 2000 to 2022.

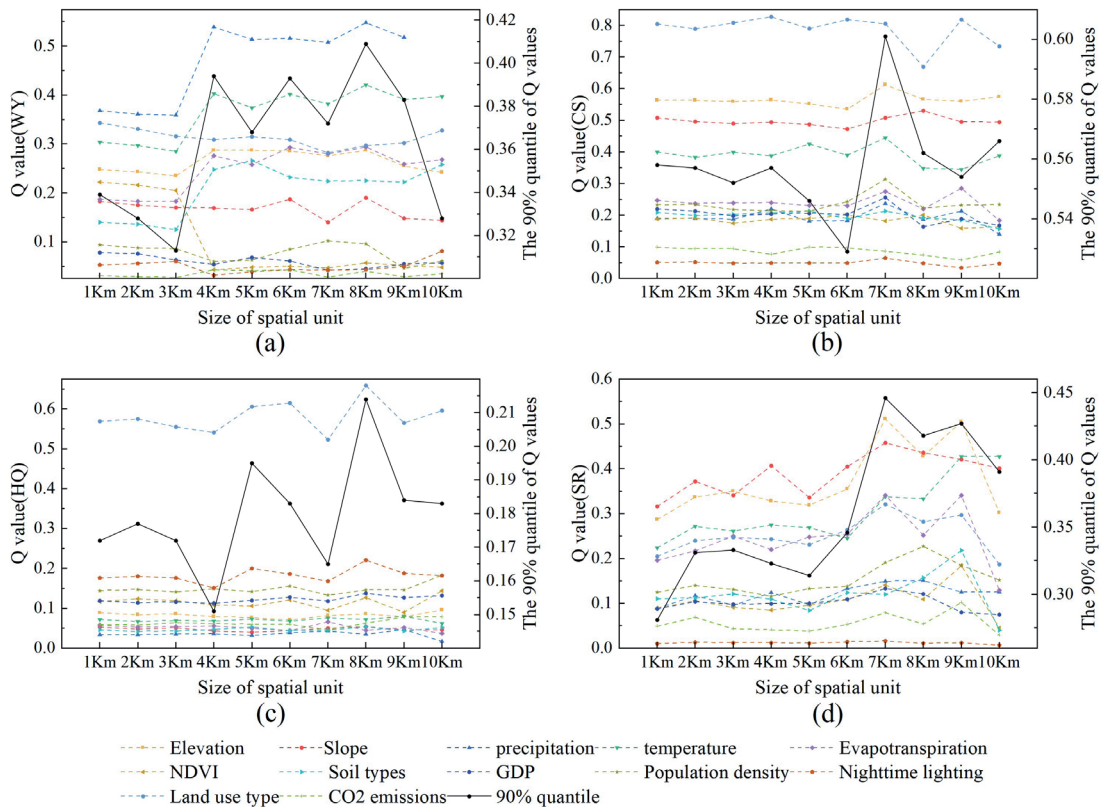
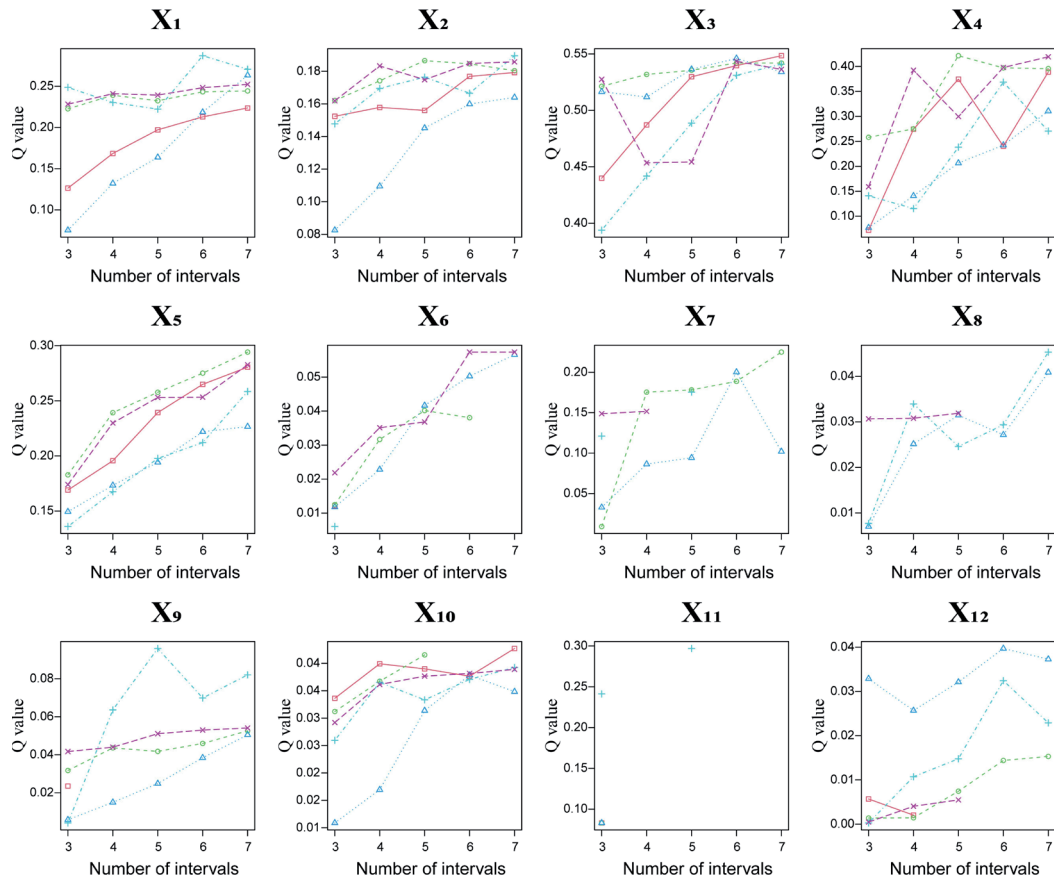
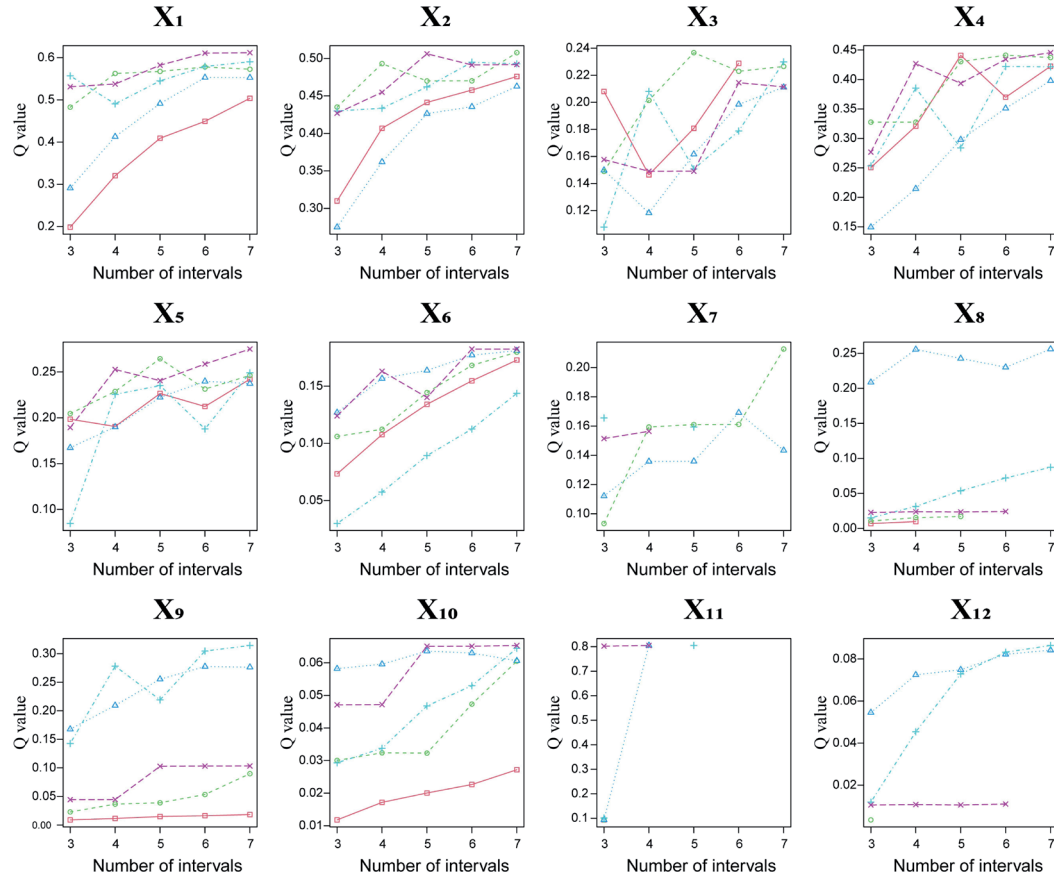


Fig. S2. Scale effects of explanatory variables based on OPGD models.

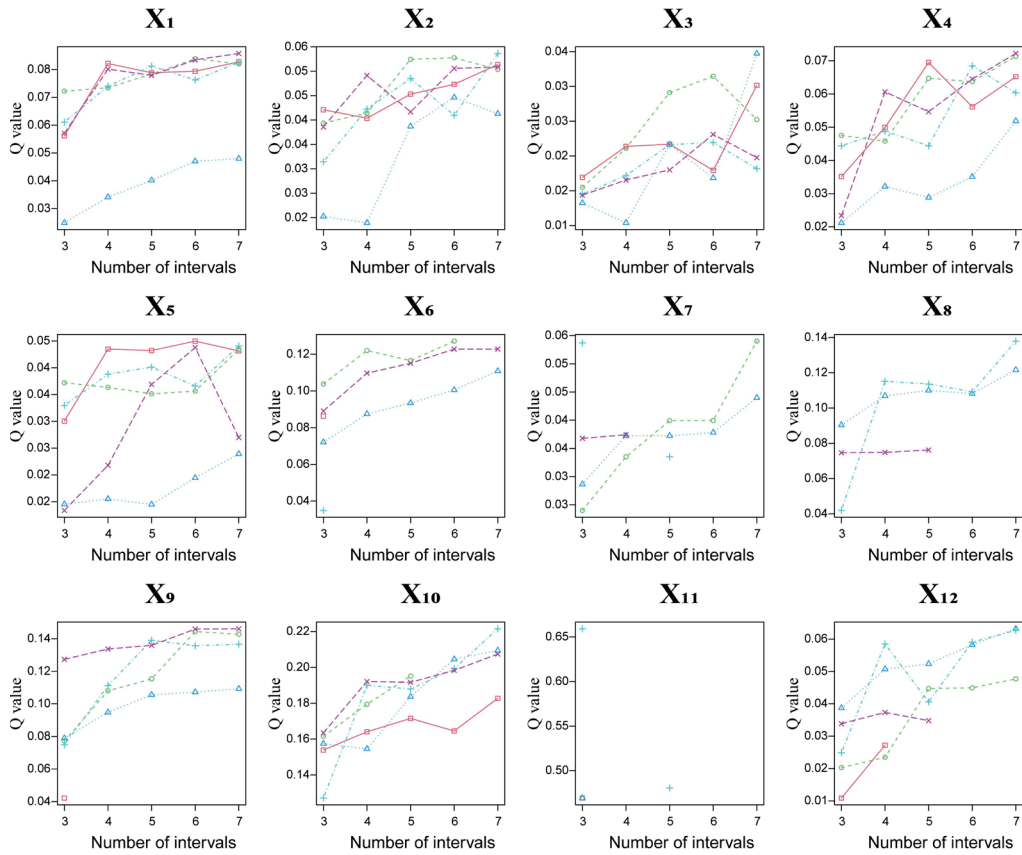


(a) Water yield

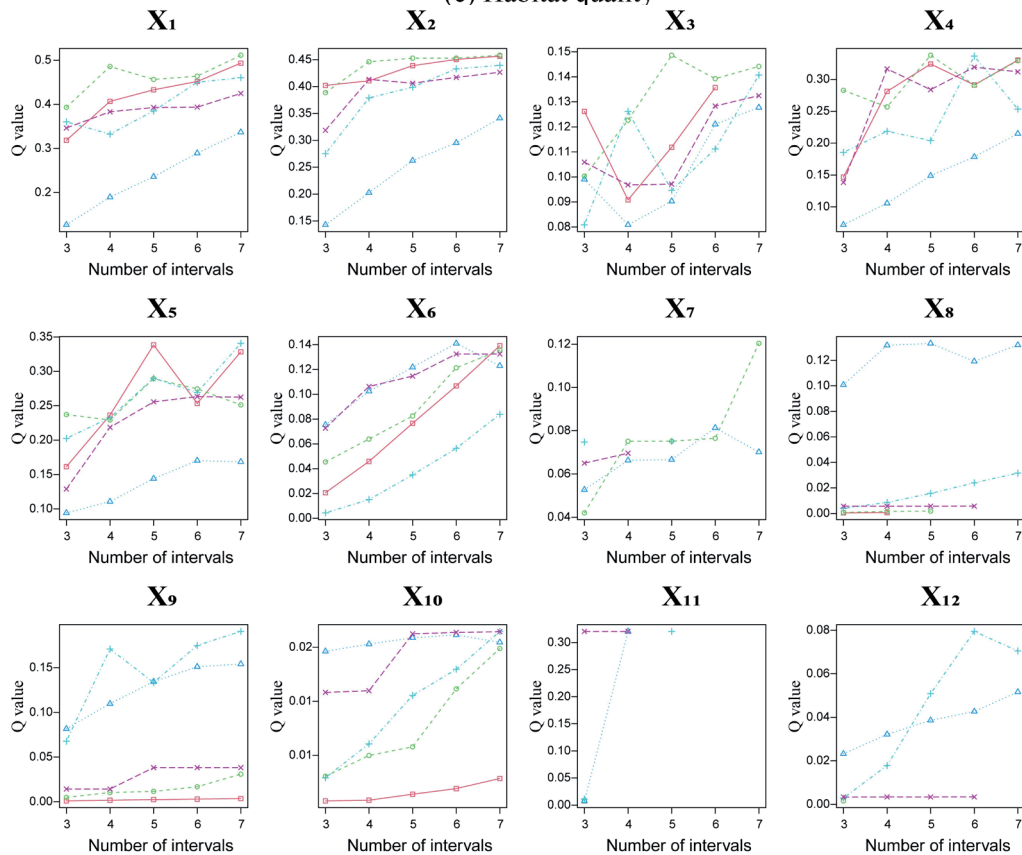


(b) Carbon stock





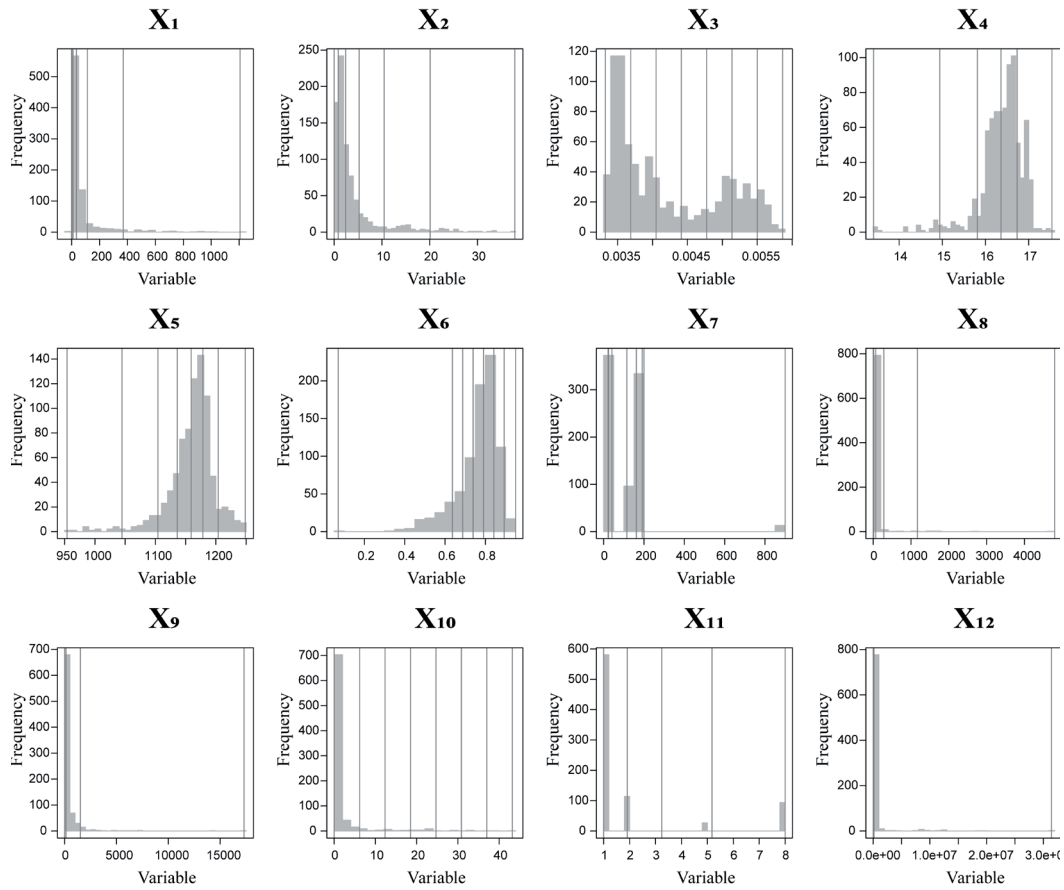
(c) Habitat quality



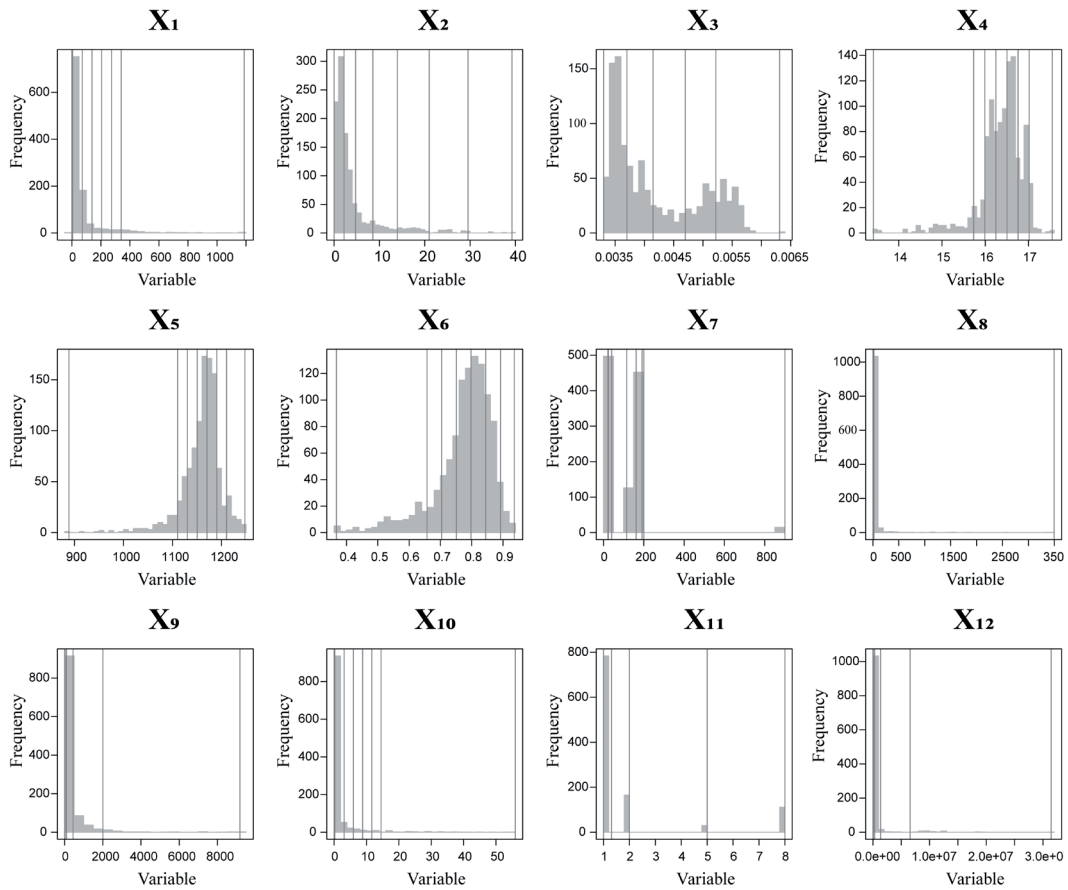
(d) Soil retention

⋯△⋯ Geometric interval
 - - - × - - - Standard deviation
 - - - ○ - - - Natural breakpoint
 ⋯△⋯ Quantife
 - - - □ - - - Equal interval

Fig. S3. Discrete effects of explanatory variables based on the OPGD model at the optimal spatial scale.

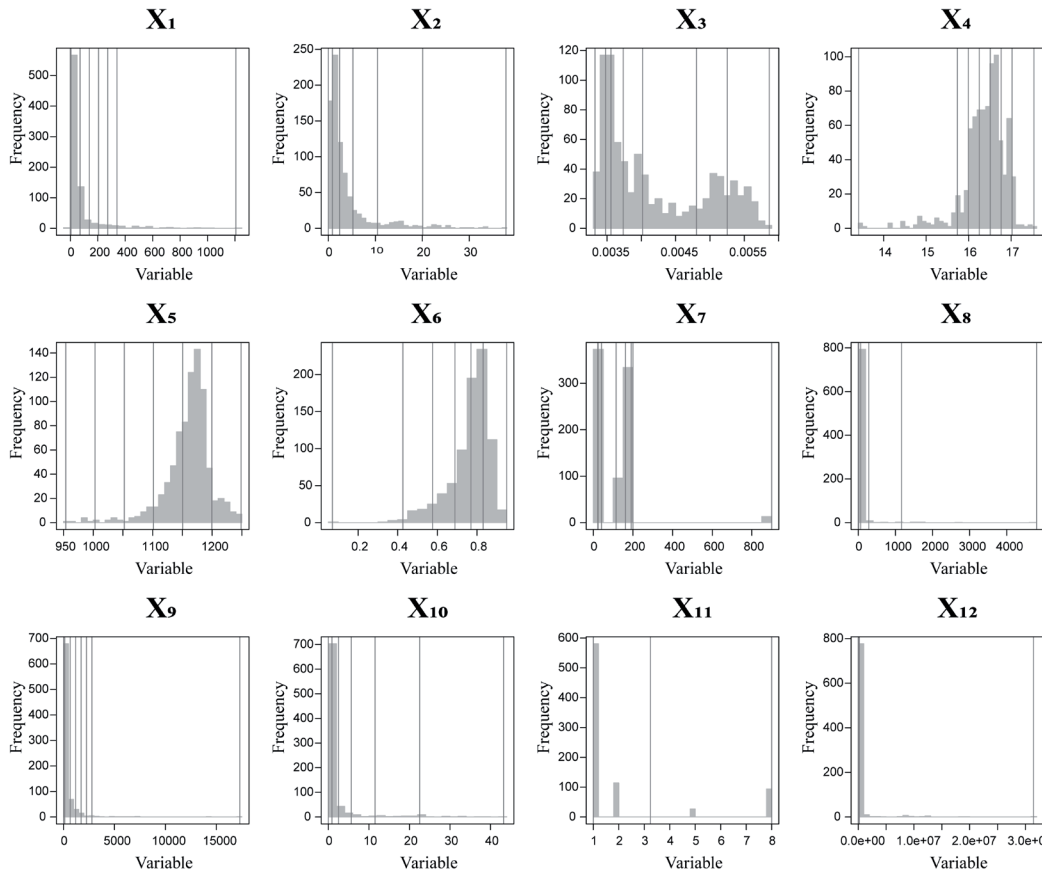


(a) Water yield

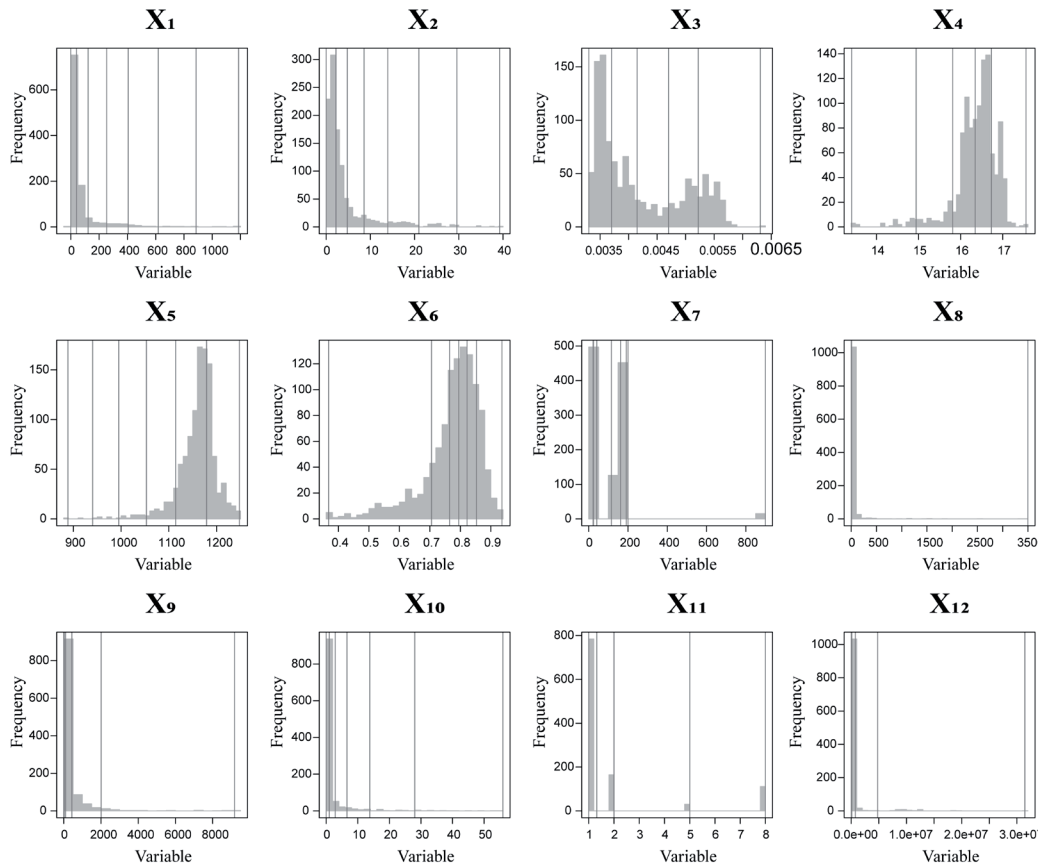


(b) Carbon stock





(c) Habitat quality



(d) Soil retention

Fig. S4. Partition results of explanatory variables based on the OPGD model at the optimal spatial scale.

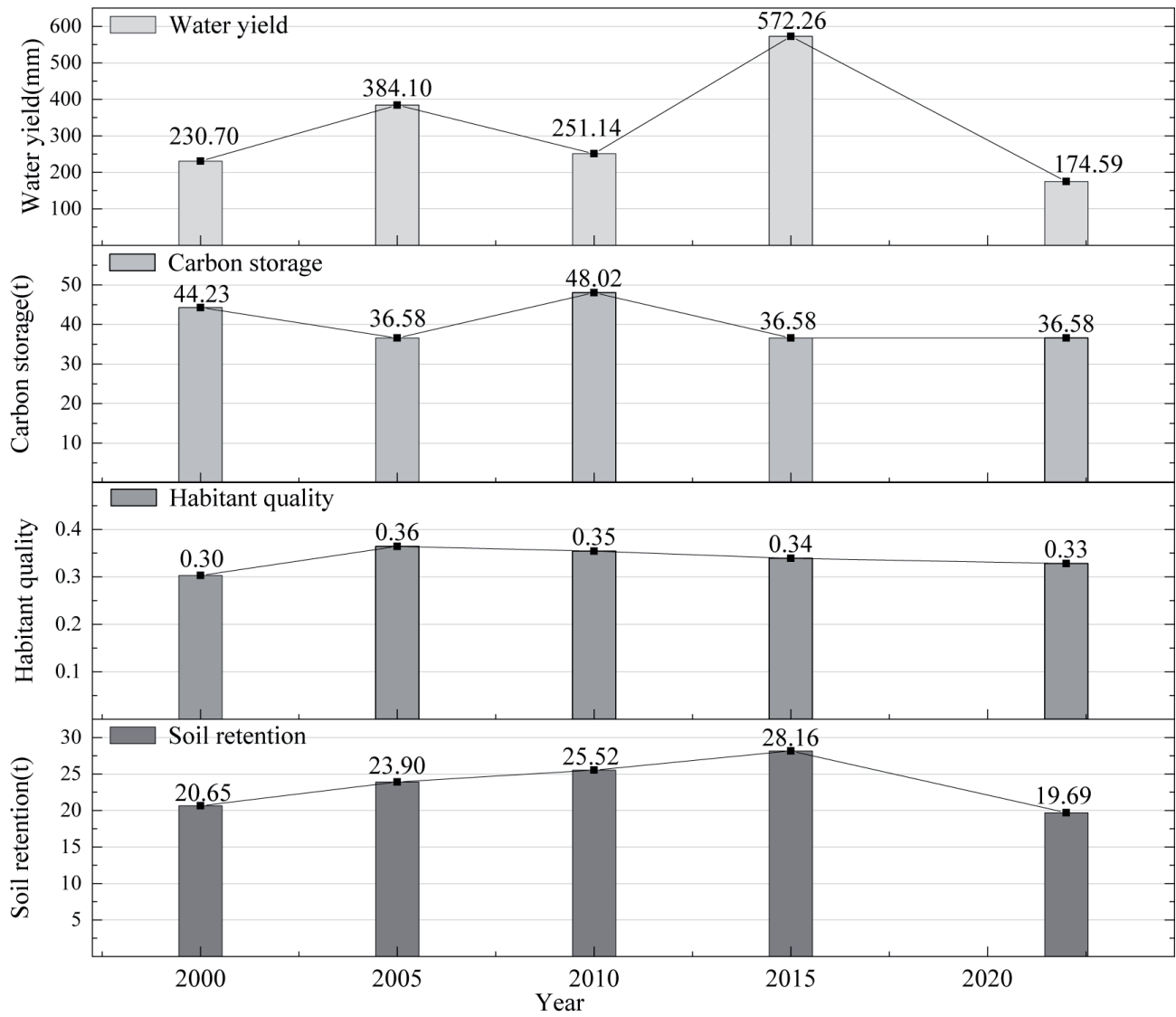


Fig. S5. Changes in ESs in the Hefei Metropolitan Area from 2000 to 2022.