

Original Research

Potential Impacts of Trehalose on Easing Salt-Induced Inhibition in *Triticum aestivum* (L.) and Its Relevance for Managing Salinity Stress at Reproductive Stage

Bushra Muhammad Fordil^{1,2}, Faryal Ahmed³, Nadia Khan^{2}, Urwah Shafeeq⁴,
Manal Abdulaziz Binobead⁵, Abdel-Rhman Z. Gaafar⁶,
Hafiz Ghulam Nabi⁷, Abdul Waheed^{8*}**

¹School of Basic Medical Sciences, Shenzhen University Medical School, Shenzhen University, Shenzhen, Guangdong, 518055, China

²Department of Genetics, University of Karachi, Sindh, Pakistan

³Department of Zoology, University of Baltistan, Gilgit Baltistan, Pakistan

⁴Department of Food Science and Engineering, School of Food and Biological Engineering, Jiangsu University, Zhenjiang, Jiangsu 212013, China

⁵Department of Food Science and Nutrition, College of Agriculture Food Science, King Saud University, Riyadh, Saudi Arabia

⁶Department of Botany and Microbiology, College of Science, King Saud University, P.O. Box 11451, Riyadh, Saudi Arabia

⁷State Key Laboratory of Agrobiotechnology/Beijing Key Laboratory of Crop Genetic Improvement, College of Agronomy and Biotechnology, China Agricultural University, Beijing 100193, China

⁸Shenzhen Branch, Guangdong Laboratory for Lingnan Modern Agriculture, Genome Analysis Laboratory of the Ministry of Agriculture, Agricultural Genomics Institute at Shenzhen, Chinese Academy of Agricultural Sciences, Shenzhen, Guangdong, 518020, China

Received: 29 April 2024

Accepted: 4 September 2024

Abstract

Soil salinity significantly hampers wheat production by adversely affecting growth attributes, posing a challenge to food security and economic stability. This study investigates the impact of soil salinity on wheat production, focusing on the mitigation of salinity stress through the application of trehalose, a known osmoprotectant. We treated seven-day-old seedlings of various wheat genotypes (Bhittai, Zamindar-04, DN-84, Zincol-16) with trehalose (10 and 50 mM) in the presence and absence of NaCl (150 mM) for five days. Our findings indicate that under saline conditions, genotypes Bhittai and Zamindar-04 exhibited the highest tolerance, showing longer shoot lengths and greater dry weight. Conversely, DN-84 and Zincol-16 demonstrated lower tolerance with shorter root and shoot lengths.

* e-mail: 2021y90100044@caas.cn

** e-mail: nadiakhan@uok.edu.pk

The application of trehalose significantly improved the fresh and dry weight of Zamindar-04 and Bhittai. Zamindar-04 and Bhittai emerged as superior genotypes with Zamindar-04 having the least POX activity, and Bhittai showcasing increased spikelets, reduced trehalose content, and high mean productivity (MP) value. The study concludes that trehalose significantly mitigates the adverse effects of soil salinity on wheat growth by enhancing stress tolerance in specific genotypes, notably Bhittai and Zamindar-04. In conclusion, the application of trehalose offers a promising strategy to improve wheat production under saline conditions, particularly for genotypes with higher inherent tolerance.

Keywords: soil salinity, genetic diversity, trehalose treatment, morphological traits

Introduction

Agronomic characteristics such as plant height, biomass as a whole, yield index, number of productive tillers, spike length, number of grains per spike, weight of grains per spike, and 1000-grain weight are the main factors that influence wheat production [1]. Increased wheat production has been attributed to physiological features such as water-soluble polysaccharides, photosynthetic rate, canopy temperature, and chlorophyll content [2-5]. Moreover, it was also proposed that a genetic increase in crop output may be easily attained if many traits indicating improved physiological and agronomic performance and stress tolerance were combined into a single variety [6].

It is considered that salinity is the main factor contributing to soil degradation. Around twenty percent of cultivable land has been moved to salinity-affected areas thus far, making up nearly 6.5 percent of the world's total land area [7]. Furthermore, soil is deemed saline if its electric conductivity is 4 D s m^{-1} and its osmotic pressure is 0.2 MPa, which causes plants to succumb to chlorosis and necrosis [8]. Plant roots are the first organs to sense salinity stress, which inhibits plant growth in the short and long term. A reduced water supply has an immediate impact on plants, causing osmotic stress. However, long-term consequences lead to a surplus of plant stress, which causes an ionic imbalance [9]. Reactive oxygen species (ROS) are also produced due to these ions' disruption of the energy flow in photosynthetic systems [10]. Malondialdehyde (MDA) is created when ROS interacts with membrane lipids, which disrupts the cell membrane [11]. Plants employ various strategies to mitigate the effects of salinity stress, the most significant of which is the build-up of toxic ions, such as Na^+ , in shoots through various mechanisms. These mechanisms include blocking ion uptake and transport to shoots through the production of osmolytes, such as proline or trehalose, depending on whether or not enzyme antioxidants are involved. Antioxidant enzymes found in plants, such as catalase (CAT) and superoxide dismutase (SOD), have unique defense mechanisms against reactive oxygen species. These antioxidant enzymes guard against $\text{O}_2^{\cdot -}$ and H_2O_2 damage [12]. It is now known that abiotic pressure causes a range of morphological, physio-biochemical, and molecular changes in plants during their growth and production [13]. These changes impact seedling

metabolism, germination event dispersion, reduced growth of seedlings, and delayed germination [14]. Trehalose serves as an osmoprotectant. This non-reducing disaccharide enhances salt stress tolerance by preserving osmotic balance and metabolic homeostasis [15]. Because of its non-reducing characteristics and chemically unreactive solubility, it is regarded as a beneficial solute or osmoprotectant even at high concentrations [16]. This chemical can scavenge reactive oxygen species (ROS) that impair regular metabolic processes during growth and development, protecting the machinery involved in plant protein synthesis [17]. Additionally, controls the expression of genes and signaling pathways linked to detoxification and the stress response [18, 19]. Under stressful situations, it takes the shape of an amorphous glass structure and shields plants from abiotic stresses, such as dehydration, and helps them regain their ability to perform their intended tasks once normal, non-stressful environmental conditions are restored [20].

Trehalose has the extra benefit of being an antioxidant and signaling chemical. It also functions as a stress-responsive gene element during detoxification [21]. Nevertheless, most plants do not produce enough Tre to counteract the harmful effects of abiotic stress. On the other hand, by raising the internal concentration of these osmolytes, external Tre administration has been suggested as a possible means of generating stress tolerance [22]. Tre was applied exogenously to mitigate a variety of abiotic stimuli, such as heat, water shortage, salinity, and drought in maize and wheat [23]. Increasing osmoprotectant molecules, including glucose, trehalose, proline, and free amino acids, is an osmoprotectant that can assist wheat plants in tolerating salinity stress [24]. The findings are expected to provide valuable insights for developing wheat varieties that can thrive in saline environments, thereby contributing to sustainable agriculture in regions affected by soil salinity.

Material and Methods

Plant Material and Experimental Design

The current research utilized ten wheat genotypes, namely: (1) NIA Amber-10, (2) Bhatnagar, (3) Bhittai, (4) Borloug-16, (5) DN-11, (6) DN-84, (7) Punjab-11, (8) TJ-83, (9) Zamindar-04, and (10) Zincol-16. In the quest to

understand the resilience and adaptability of wheat under various stress conditions, a comprehensive experiment was initiated in the departmental screen house during the 2019-2020 period. This study, set against a clay loam soil backdrop, employed a meticulous split-plot design with three replications to investigate the effects of different treatments on wheat planted on the 20th of November 2019. A total of 180 pots were used in the experiment, each measuring approximately 15 cm in width and 20 cm in length, with 12-15 plants per pot. The treatments, pivotal to the research, were administered on the 45th and 60th day post-sowing, delineating into a control group that received normal watering, a salinity group subjected to 150 mM NaCl, and trehalose treatments at concentrations of 10- and 50-mM. These interventions aimed to elucidate their impact on various agronomic attributes of wheat, which were meticulously recorded following leaf collection on the 75th day after sowing.

Plant Traits and Statistical Results

Plant height was measured using a ruler across ten randomly selected plants. The length of the spike and the number of spikelets were determined from ten randomly chosen spikes per replication. The grain number is counted from five selected spikes. The weight of 1000 grains was calculated from five randomly selected spikes. Duncan's Multiple Range Test (DMRT), facilitated by the statistical software SPSS version 16, further explored these differences among means. The total protein content was then estimated using a BSA standard curve. Peroxidase activity was assessed with slight modifications to the [25] method, involving phosphate buffer preparation, guaiacol, and hydrogen peroxide solutions. The reaction mixture's absorbance was recorded at 470 nm, providing insights into peroxidase levels within the wheat leaves. Catalase estimation followed [26] methodology, focusing on the reaction between plant sample extracts and hydrogen peroxide in a potassium phosphate buffer. The reduction in optical density was monitored at 240 nm, offering a glimpse into catalase activity under different treatment conditions. Proline content was determined following [27] involving sulfosalicylic acid for sample preparation and a subsequent reaction with acetic acid and ninhydrin solution. The absorbance measured at 520 nm against a proline standard curve elucidated proline levels within the samples. Trehalose quantification was adeptly performed with minor modifications to [28] involving ethanol extraction, hydrolysis steps, and anthrone solution for color development. Absorbance readings at 630 nm facilitated the calculation of trehalose concentration. Lastly, lipid peroxidation was estimated by measuring malondialdehyde (MDA) content using the [29] method. This involved trichloroacetic acid (TCA) and thiobarbituric acid (TBA) in TCA for sample processing, with absorbance measurements at 600 nm and 532 nm revealing insights into lipid peroxidation levels.

Extraction of Genomic DNA

Seeds were sown in Petri plates, and the first leaf was harvested for DNA extraction on the seventh day. Genomic DNA was extracted from wheat leaves using the Thermo Scientific GeneJET DNA purification kit. A 0.1 g leaf sample was homogenized in liquid nitrogen, mixed with 350 µL of Lysis Buffer A, and vortexed. After adding 20 µL of RNase A and 50 µL of Lysis Buffer B, the mixture was vortexed and incubated at 65°C for 10 minutes. 130 µL of Precipitation Solution was added, followed by ice incubation and centrifugation. The supernatant was transferred to a new tube, mixed with DNA binding solution and ethanol, and placed in a spin column. The column was washed twice, and DNA was eluted with Elution Buffer. The extracted DNA was stored at -20°C.

Results and Discussion

Agronomic Traits

Data on PH, SN, SL, SPKLT, GN, and TGW were collected for Trehalose treatment groups (10 and 50 mM) and control conditions (150 mM NaCl). The analysis of variance (ANOVA) was carried out with SPSS software (Table 1). The data were presented to show potential variations between groups, and the means were compared using Duncan's Multiple Range Test (DMRT). Table S1 highlights significant variations in plant height, spike number, spike length, spikelet number, grain number, and thousand-grain weight among different wheat treatments. Control group plants averaged 57 cm in height, with Punjab-11 being the tallest (62 cm) and TJ-83 the shortest (53 cm). Under salt stress, plant height decreased by 23% on average. Foliar spraying with trehalose increased plant height, with the highest improvement at 50 mM trehalose (Fig. 1). Spike numbers varied, with a control average of 12, and decreased by 23% under 150 mM NaCl. Trehalose treatments increased spike counts, with the highest increase at 50 mM. Spike length was reduced by salinity but improved with trehalose, reaching a maximum of 14.5 cm in TJ-83 under 50 mM trehalose. Spikelet numbers dropped by 23% under salt stress but increased with trehalose treatments, achieving the highest number in Bhattoor (Supplementary Table S1). Grain numbers, crucial for yield, decreased by 34% under salt stress but increased with trehalose. Bhittai had the highest grain count at 50 mM trehalose. Thousand-grain weight decreased by 28% under salt stress but increased significantly with trehalose treatments, reaching 45g in Bhittai at 50 mM trehalose. Trehalose mitigated the negative effects of NaCl across all measured parameters. The salinity stress reduced wheat spike numbers by an average of 23%, with the most significant decrease observed in the Bhattoor variety. This reduction is attributed to salinity's disruption of plant biochemical processes. [30]

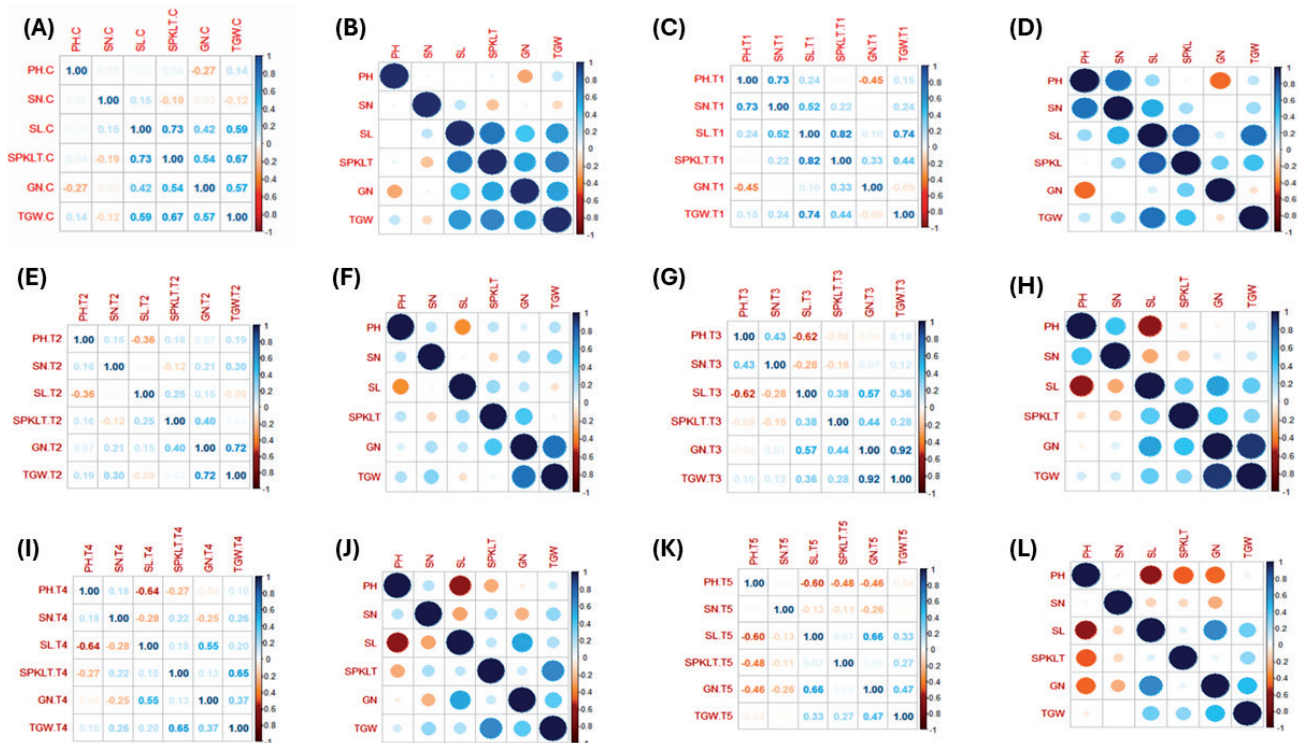


Fig 1. (A-B) agronomic traits under control condition, (C-D) agronomic traits under NaCl treatment, (E-F) wheat varieties under 10 mM Trehalose, (G-H) agronomic traits under 50 mM Trehalose, (I-J) agronomic traits under 10 mM Trehalose and 150 mM NaCl, and (K-L) wheat varieties under 50 mM Trehalose and 150 mM NaCl.

supports these findings, indicating salinity's detrimental effects on wheat and barley yield parameters. However, applying Trehalose mitigated salinity's negative effects, increasing spike numbers by 10% and 23% with 10 mM and 50 mM treatments, respectively. This positive response to Trehalose aligns with its observed benefits in maize under salt stress [31]. Despite a 5% reduction in spikes with 10 mM Trehalose under salinity, a 50 mM dose led to a 2% increase, echoing [32] on Trehalose's effectiveness in improving wheat resilience to abiotic stress. Salinity stress significantly reduced spike length in wheat by 20%, impacting productivity due to shorter spikes and fewer grains. However, Trehalose treatment improved spike length, with a 17% increase observed at 50 mM concentration. This improvement is attributed to Trehalose's stress-alleviating properties, enhancing plant growth and yield. [33, 34] also highlight salinity's negative effects on growth and Trehalose's role in maintaining cell turgor and protecting plants under stress. Both 10 mM and 50 mM Trehalose treatments effectively countered salinity's impact, with reduced spike length decreases of 11% and 6%, respectively. Trehalose's effectiveness in enhancing growth under stress conditions is further supported by research on *Brassica* species [35], emphasizing its role in stress mitigation and biomass production. Trehalose treatments showed positive associations between grain number and weight, with Bhittai and DN-84 identified

as high-yielding varieties. Genotypes with high mean productivity values were deemed stress-tolerant, in line with prior studies. Trehalose application increased protein content, particularly in Zincol-16, stabilizing enzymes and enhancing stress resilience. The study explored oxidative stress markers, with trehalose effectively mitigating salt-induced enzyme activity.

Correlation Coefficient

Correlation coefficient analysis revealed significant relationships among various plant traits under different conditions. In normal settings (Fig. 1A-B), spike length correlated positively with spikelet number (0.425**) and 1000-grain weight (0.405*). Under salt stress (Fig. 1C-D), spike length showed strong positive correlations with spikelet number (0.688***) and 1000-grain weight (0.689***), while plant height was negatively correlated with grain number (-0.411**). In the presence of 10 mM trehalose (Fig. 1E-F), plant height negatively correlated with spike number (-0.554**), and under 50 mM trehalose (Fig. 1G-H), grain number exhibited positive correlations with spike length (0.459**) and 1000-grain weight (0.880***). Combined stress conditions (Fig. 1I-J) showed positive correlations between grain number and spike length (0.403*), and strong correlations of 1000-grain weight with spikelet number (0.568***), while spike length was negatively correlated with

plant height (-0.461**). In NaCl with 50 mM trehalose (Fig. 1K-L), spike length and 1000-grain weight were positively correlated with grain number (0.418**, 0.442**), whereas plant height showed a negative correlation with spikelet number (-0.420**). These findings highlight the intricate interplay of traits under stress and the potential role of trehalose in modulating these relationships for enhanced crop productivity.

Tolerance Indices

In the study, Mean Productivity (MP) (Table S1) varied significantly across treatments: under saline stress, DN-84 and Bhittai exhibited the highest values of 48, followed closely by Punjab-11 and Zincol-16 with 45. With 10 mM Trehalose, Bhittai showed the highest MP of 57, while under 50 mM Trehalose, Bhittai again excelled with a maximum of 67, followed by DN-84 (61) and Zamindar-04 (64). The combined effect showed Bhittai reaching an MP of 50. Under 50 mM Trehalose with 150 mM NaCl, Bhittai led with an MP of 52, followed closely by Zincol-16 and DN-84 with 50 (Fig. 2A). Regarding Yield Stability Index (YSI), DN-11 and Borloug-16 demonstrated the highest (Table S1) values under 10 mM Trehalose (1.15 and 1.14, respectively), while DN-11 and Zamindar-04 achieved the peak YSI of 1.29 with 50 mM Trehalose. DN-11 also exhibited a YSI of 1.00 under 50 mM Trehalose with 150 mM NaCl (Fig. 2B). Stress Susceptible Index (SSI) values indicated that TJ-83 and Zincol-16 were more susceptible (SSI values of 1.59 and 1.57, respectively), whereas DN-84 and DN-

11 showed the highest tolerance (SSI values of 0.56 and 0.66, respectively) under saline stress. After treatment with 50 mM Trehalose, Zamindar-04 led with an SSI of 1.30, followed by DN-11, Borloug-16, and Bhittai (all at 1.24) (Fig. 2C). Yield Index (YI) highlighted (Table S1) DN-84 as the top performer (YI of 1.26), with Bhittai leading under 50 mM Trehalose (YI of 1.18). These indices collectively underscore Bhittai and DN-84 as robust performers in terms of stress tolerance and yield stability across various stress and treatment conditions in wheat cultivation (Fig. 2D).

Mean Productivity (MP) under various conditions: control, 10 mM Trehalose, 50 mM Trehalose, and 50 mM Trehalose with 150 mM NaCl (2a). Yield Stability Index (YSI) under control, 10 mM Trehalose, 50 mM Trehalose, and 50 mM Trehalose with 150 mM NaCl (2b). Stress Susceptibility Index (SSI) under saline stress, 10 mM Trehalose, and 50 mM Trehalose (2c). Yield Index (YI) under control, 10 mM Trehalose, 50 mM Trehalose, and 50 mM Trehalose with 150 mM NaCl (2d).

Formula:

$$1. \text{Yield Stability Index (YSI)} = \frac{Y_s}{Y_p} \quad [36]$$

Y_s : Yield under stress conditions, Y_p : Yield under non-stress conditions

$$2. \text{Yield Index (YI)} = \frac{Y_s}{Y_{s'}} \quad [37]$$

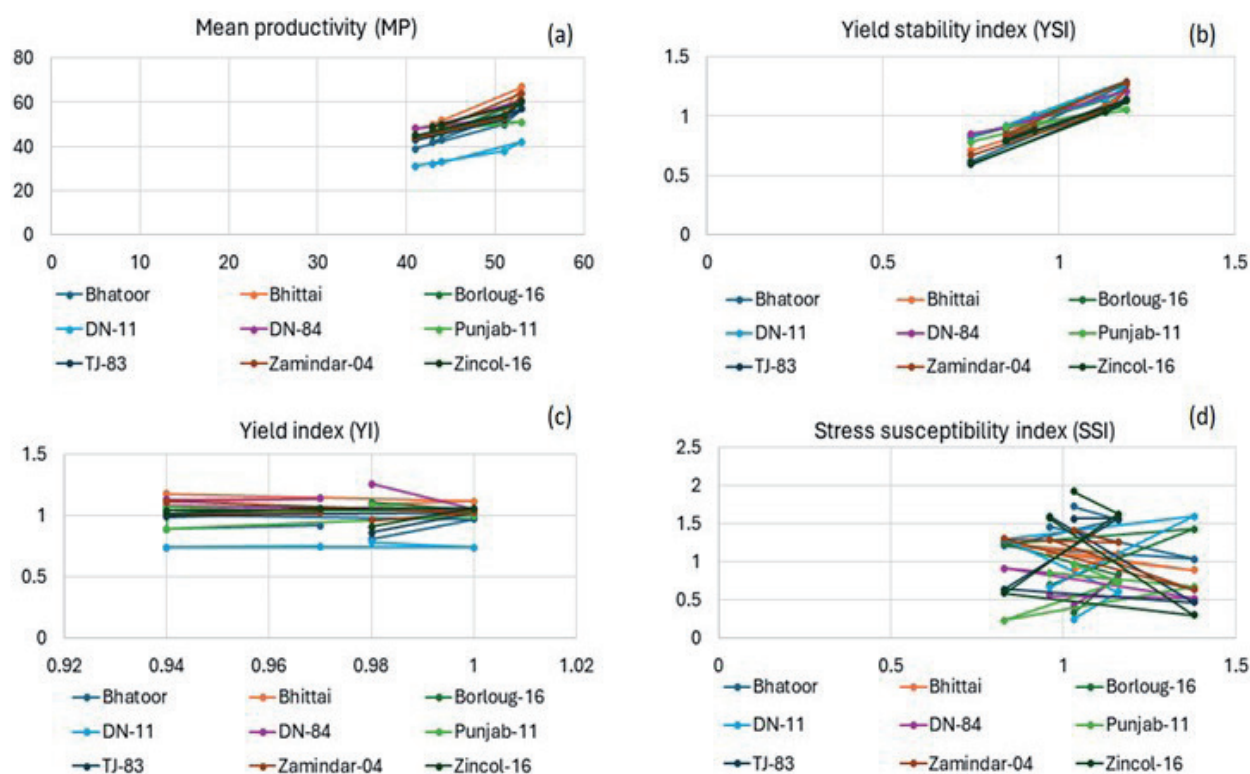


Fig 2. Tolerance Indices of Wheat Cultivars Under Different Stress and Treatment Conditions.

Table 1. Mean squares for agronomic traits, biochemical traits of tested wheat varieties under irrigated, control and treatment conditions.

Sources of Variance	Varieties (V)	Treatments (T)	V×T	Error
d.f	9	5	45	120
PH (cm)	100.700***	1004.992***	16.242***	0.837
SN (counts)	31.793***	122.299***	2.087ns	0.005
SL (cm)	7.582***	55.371***	1.371***	0.044
SPKLT (counts)	5.207***	148.147***	2.369***	0.26
GN (counts)	15691.830***	25857.316***	355.634***	62.542
TGW (g)	136.756***	868.862***	13.714***	1.733
Total protein content (µg-1mL)	0.002***	0.015***	0.001***	0.26
Peroxidase activity (mg protein-1 8 minutes)	0.053**	3.037***	0.050***	0.005
Catalase activity (mg protein-1min)	12.360***	164.055***	3.633***	0.032
Proline content (µg-1mL)	0.426***	2 5857.316***	10.814***	582.541
Trehalose (nmol g-1fw)	0.031***	1.696***	0.0098***	1.22
MDA (nmol g-1 fw)	1.064***	26.884***	0.636***	0.564

Note: d.f: degrees of freedom; *** $p \leq 0.005$

Ys: Yield under stress conditions, Ys': Mean yield of all genotypes under stress conditions

$$3. \text{ Mean Productivity (MP)} = \frac{Y_p + Y_s}{2} \quad [38]$$

Yp: Yield under non-stress conditions Ys: Yield under-stress conditions

$$4. \text{ Stress Susceptibility Index (SSI)} = \frac{(1 - \frac{Y_p}{Y_s})}{(1 - \frac{Y_{p'}}{Y_{s'}})} \quad [39]$$

Ys: Yield under stress conditions, Yp: Yield under non-stress conditions, Ys': Mean yield of all genotypes under stress conditions, Yp': Mean yield of all genotypes under non-stress conditions

Physiological Responses and Antioxidant Enzyme Activities

The mean squares analysis revealed significant main effects and interactions for total protein concentrations across wheat genotypes (Table 1). The average total protein content was 142 µg, with Zincol-16 exhibiting the highest (172 µg) and Zamindar-04 the lowest (119 µg) levels. Salt stress significantly decreased total protein content by 18% on average, with NIA Amber-10 showing the highest (156 µg) and Borloug-16 the lowest (73 µg) concentrations under stress conditions. Trehalose treatments (10 mM and 50 mM) increased

the total protein content by 18% and 25%, respectively, with Zincol-16 showing the highest increase (209 µg) under 50 mM trehalose. Antioxidant enzymes such as peroxidase (POX) and catalase (CAT) were also assessed. POX activity was highest in Zincol-16 (0.511 mg protein⁻¹ per 8 minutes) and lowest in Zamindar-04 (0.265 mg protein⁻¹ per 8 minutes), increasing by up to 151% under salt stress. CAT activity averaged 5.02 mg protein⁻¹ per minute, with Zamindar-04 recording the highest (6.55 mg protein⁻¹ per minute) and Bhatoor the lowest (3.81 mg protein⁻¹ per minute) activity levels. Proline accumulation under stress conditions varied, with significant increases observed, particularly in Zamindar-04 (3.21 µg/mL) under 150 mM NaCl stress. Trehalose treatments reduced proline accumulation, mitigating oxidative damage (Supplementary Table S1). Trehalose levels increased significantly under saline stress, with DN-84 showing the highest (0.822 nmol / gram fresh weight) and Bhittai the lowest (0.537 nmol / gram fresh weight) levels. MDA content, a marker of lipid peroxidation, increased under salt stress but decreased with trehalose treatments, with significant effects observed. Zincol-16 showed the highest MDA increase (2.89 nmol / gram fresh weight) under 50 mM trehalose, while Borloug-16 showed the lowest (0.60 nmol / gram fresh weight).

Conclusion

This study demonstrated that NaCl treatment altered agronomic and biochemical traits in wheat genotypes,

with Zamindar-04 excelling in plant height and minimal peroxidase activity, DN-84 showing resilience in spikelet number and TGW with low lipid peroxidation, and Bhittai exhibiting high spikelet number and membrane permeability despite low trehalose sugar levels. Trehalose treatment mitigated salt stress effects by enhancing cell metabolism and preserving membrane integrity, although oxidative damage indicators like MDA and proline increased under stress. Tolerant genotypes like NIA Amber-10, Borloug-16, and DN-84 showed reduced stress markers. Exogenous trehalose was absorbed without disrupting normal plant functions, regulating enzymatic activities effectively. Further research is needed to optimize trehalose's potential in enhancing wheat stress tolerance and crop productivity.

Acknowledgment

This research was funded by the Researchers Supporting Project, number (RSPD2024R637), King Saud University, Riyadh, Saudi Arabia.

Conflict of Interest

The authors declare no conflict of interest.

References

- CHEN T.H., MURATA N. Enhancement of tolerance of abiotic stress by metabolic engineering of betaines and other compatible solutes. *Current Opinion in Plant Biology*, **5** (3), 250, **2002**.
- RIEDEL L., MÖLLER M., PIEPHO H.-P., RENTEL D., LICHTHARDT C., GOLLA B., KAUTZ T., FEIKE T. Site conditions determine heat and drought induced yield losses in wheat and rye in Germany. *Environmental Research Letters*, **19** (3), 034024, **2024**.
- RASHEED A., XIA X., HE Z. Evolution in the Genotyping Platforms for Plant Breeding. In *Frontier Technologies for Crop Improvement*, Springer: pp. 65, **2024**.
- MIROSAVLJEVIĆ M., MOMČILOVIĆ V., DRAŽIĆ T., AČIN V., JOCKOVIĆ B., MIKIĆ S., BRBAKLIĆ L., ŽIVANČEV D., ZORIĆ M., PRŽULJ N. Genetic progress in grain yield and associated changes in spikelet and grain traits in historical set of Pannonian wheat cultivars. *Euphytica*, **220** (1), 10, **2024**.
- PERNICOVÁ N., HLAVÁČOVÁ M., FINDUROVÁ H., ČÁSLAVSKÝ J., URBAN O., KLEM K., TRNKA M. Grain carbon isotopes indicate the ability of wheat plants to maintain enhanced intrinsic water-use efficiency even after short-term exposure to high temperatures and drought. *Plant Physiology and Biochemistry*, **205**, 108155, **2023**.
- LOPES M., REYNOLDS M., MANES Y., SINGH R., CROSSA J., BRAUN H. Genetic yield gains and changes in associated traits of CIMMYT spring bread wheat in a "historic" set representing 30 years of breeding. *Crop Science*, **52** (3), 1123, **2012**.
- CHAURASIA S., KUMAR A. The key genomic regions harboring QTLs associated with salinity tolerance in bread wheat (*Triticum aestivum* L.): a comprehensive review. *Journal of Crop Science and Biotechnology*, **27** (1), 17, **2024**.
- MUJEEB-KAZI A., MUNNS R., RASHEED A., OGBONNAYA F.C., ALI N., HOLLINGTON P., DUNDAS I., SAEED N., WANG R., RENGASAMY P. Breeding strategies for structuring salinity tolerance in wheat. *Advances in Agronomy*, **155**, 121, **2019**.
- HUALPA-RAMIREZ E., CARRASCO-LOZANO E.C., MADRID-ESPINOZA J., TEJOS R., RUIZ-LARA S., STANGE C., NORAMBUENA L. Stress salinity in plants: New strategies to cope with in the foreseeable scenario. *Plant Physiology and Biochemistry*, 108507, **2024**.
- ABID M., ZHANG Y.J., LI Z., BAI D.F., ZHONG Y.P., FANG J.B. Effect of salt stress on growth, physiological and biochemical characters of four kiwifruit genotypes. *Scientia Horticulturae*, **271**, 109473, **2020**.
- KAUR S., TIWARI V., KUMARI A., CHAUDHARY E., SHARMA A., ALI U., GARG M. Protective and defensive role of anthocyanins under plant abiotic and biotic stresses: An emerging application in sustainable agriculture. *Journal of Biotechnology*, **361**, 12, **2023**.
- NAVARRO-LEÓN E., LÓPEZ-MORENO F.J., DE LA TORRE-GONZALEZ A., RUIZ J.M., ESPOSITO S., BLASCO B. Study of salt-stress tolerance and defensive mechanisms in *Brassica rapa* CAX1a TILLING mutants. *Environmental and Experimental Botany*, **175**, 104061, **2020**.
- KAPAZOGLU A., GERA KARI M., LAZARIDI E., KLEFTOGIANI K., SARRI E., TANI E., BEBELI P.J. Crop wild relatives: A valuable source of tolerance to various abiotic stresses. *Plants*, **12** (2), 328, **2023**.
- EL SABAGH A., HOSSAIN A., BARUTÇULAR C., IQBAL M.A., ISLAM M.S., FAHAD S., SYTAR O., ÇİĞ F., MEENA R.S., ERMAN M. Consequences of salinity stress on the quality of crops and its mitigation strategies for sustainable crop production: an outlook of arid and semi-arid regions. *Environment, Climate, Plant and Vegetation Growth*, 503, **2020**.
- SELEIMAN M.F., ASLAM M.T., ALHAMMAD B.A., HASSAN M.U., MAQBOOL R., CHATTHA M.U., KHAN I., GITARI H.I., USLU O.S., ROY R. Salinity stress in wheat: effects, mechanisms and management strategies. *Phyton* (0031-9457), **91** (4), **2022**.
- KARAMZEHI R., EINALI A. Trehalose-induced metabolic responses in basil (*Ocimum basilicum*) seedlings under salt treatment. *Acta Botanica Croatica*, **83** (2), **2024**.
- SHAFFIQUE S., FAROOQ M., KANG S.-M., LEE I.-J. Recent Advances in Biochemical Reprogramming Network Under Drought Stress in Soybean. *Journal of Soil Science and Plant Nutrition*, 1, **2024**.
- RAJKUMARI N., CHOWRASIA S., NISHAD J., GANIE S.A., MONDAL T.K. Metabolomics-mediated elucidation of rice responses to salt stress. *Planta*, **258** (6), 111, **2023**.
- RAZA A., BHARDWAJ S., RAHMAN M.A., GARCÍA-CAPARRÓS P., HABIB M., SAEED F., CHARAGH S., FOYER C.H., SIDDIQUE K.H., VARSHNEY R.K. Trehalose: A sugar molecule involved in temperature stress management in plants. *The Crop Journal*, **12** (1), **2023**.
- KOSAR F., AKRAM N.A., SADIQ M., AL-QURAINY F., ASHRAF M. Trehalose: a key organic osmolyte effectively involved in plant abiotic stress tolerance. *Journal of Plant Growth Regulation*, **38**, 606, **2019**.

21. MACINTYRE A.M., MELINE V., GORMAN Z., AUGUSTINE S.P., DYE C.J., HAMILTON C.D., IYER-PASCUZZI A.S., KOLOMIETS M.V., MCCULLOH K.A., ALLEN C. Trehalose increases tomato drought tolerance, induces defenses, and increases resistance to bacterial wilt disease. *PLoS One*, **17** (4), e0266254, **2022**.
22. RU C., HU X., WANG W. Nitrogen mitigates the negative effects of combined heat and drought stress on winter wheat by improving physiological characteristics. *Physiologia Plantarum*, **176** (2), e14236, **2024**.
23. ABDALLAH M.M.S., EL-BASSIOUNY H.M.S., ABOUSEEDA M.A. Potential role of kaolin or potassium sulfate as anti-transpirant on improving physiological, biochemical aspects and yield of wheat plants under different watering regimes. *Bulletin of the National Research Centre*, **43**, 1, **2019**.
24. SADIQ M., LI G., RAHIM N., TAHIR M.M. Effect of conservation tillage on yield of spring wheat (*Triticum aestivum* L.) and soil mineral nitrogen and carbon content. *International Agrophysics*, **35** (1), **2021**.
25. EVERSE J., JOHNSON M.C., MARINI M.A. Peroxidative activities of hemoglobin and hemoglobin derivatives. In *Methods in enzymology*, Elsevier: vol. **231**, pp. 547, **1994**.
26. HUANG S., HUANG P., HAREEM M., TAHZEEB-UL-HASSAN M., YOUNIS U., DAWAR K., FAHAD S., SALMEN S.H., ANSARI M.J., DANISH S. Evaluating the hidden potential of deashed biochar in mitigating salinity stress for cultivation of fenugreek. *Scientific Reports*, **14** (1), 141, **2024**.
27. THAKUR R., YADAV S. Biofilm forming, exopolysaccharide producing and halotolerant, bacterial consortium mitigates salinity stress in *Triticum aestivum*. *International Journal of Biological Macromolecules*, 130049, **2024**.
28. SARKAR M.M., RUDRA P., PAUL P., DUA T.K., ROY S. Enhanced adaptation to salinity stress in lentil seedlings through the use of trehalose-functionalized silica nanoparticles (TSiNPs): Exploring silica-sugar absorption and oxidative balance. *Plant Physiology and Biochemistry*, **206**, 108309, **2024**.
29. DHINDSA R.S., PLUMB-DHINDSA P., THORPE T.A. Leaf senescence: correlated with increased levels of membrane permeability and lipid peroxidation, and decreased levels of superoxide dismutase and catalase. *Journal of Experimental Botany*, **32** (1), 93, **1981**.
30. AYED-SLAMA O., BOUHAOUEL I., CHAMEKH Z., TRIFA Y., SAHLI A., AISSA N.B., SLIM-AMARA H. Genetic variation of salt-stressed durum wheat (*Triticum turgidum* subsp. *durum* Desf.) genotypes under field conditions and gynogenetic capacity. *Journal of Genetic Engineering and Biotechnology*, **16** (1), 161, **2018**.
31. RAZZAQ M., AKRAM N.A., CHEN Y., SAMDANI M.S., AHMAD P. Alleviation of chromium toxicity by trehalose supplementation in *Zea mays* through regulating plant biochemistry and metal uptake. *Arabian Journal of Chemistry*, **17** (2), 105505, **2024**.
32. HAN Y., LIANG A., XU D., ZHANG Y., SHI J., LI M., LIU T., QI H. Versatile roles of trehalose in plant growth and development and responses to abiotic stress. *Vegetable Research*, **4** (1), **2024**.
33. DADKHAH A., RASSAM G. Effect of Salinity on Photosynthesis and Leaf Carbohydrate Content in Two Wheat (*Triticum aestivum* L.) Cultivars. *Jordan Journal of Agricultural Sciences*, **12** (2), **2016**.
34. ZEID I. Trehalose as osmoprotectant for maize under salinity-induced stress. *Research Journal of Agriculture and Biological Sciences*, **5** (5), 613, **2009**.
35. ALAM M.M., NAHAR K., HASANUZZAMAN M., FUJITA M. Trehalose-induced drought stress tolerance: A comparative study among different Brassica species. *Plant Omics*, **7** (4), 271, **2014**.
36. HELLAL F., ABDEL-HADY M., KHATAB I., EL-SAYED S., ABDELLY C. Yield characterization of mediterranean barley under drought stress condition. *AIMS Agriculture & Food*, **4** (3), **2019**.
37. GAVUZZI P., DELOGU G., BOGGINI G., DI FONZO N., BORGHI B. Identification of bread wheat, durum wheat and barley cultivars adapted to dry areas of Southern Italy. *Euphytica*, **68**, 131, **1993**.
38. HOSSAIN A., SEARS R., COX T.S., PAULSEN G. Desiccation tolerance and its relationship to assimilate partitioning in winter wheat. *Crop Science*, **30** (3), 622, **1990**.
39. FISCHER R., MAURER R. Drought resistance in spring wheat cultivars. I. Grain yield responses. *Australian Journal of Agricultural Research*, **29** (5), 897, **1978**.

Supplementary Table 1.

Plant traits and activities	Control/treatment	NIA Amber-10	Bhatoor	Bhittai	Borloug-16	DN-11	DN-84	Punjab-11	TJ-83	Zamindar-04	Zincol-16	Average	Reduction/Promotion (%)
Plant Height	C	56.32 ^{ab} ±1.323	54.84 ^{ab} ±1.824	56.54 ^{ab} ±0.856	58.07 ^{ab} ±0.675	55.67 ^{ab} ±1.134	57.55 ^{ab} ±2.956	62.58 ^{ab} ±0.523	53.37 ^{ab} ±1.885	56.86 ^{ab} ±1.535	56.97 ^{ab} ±0.537	56.8	
	T1	46.05 ^{ab} ±1.367	41.04 ^{ab} ±0.945	42.06 ^{ab} ±1.235	45.04 ^{ab} ±0.676	45.04 ^{ab} ±1.096	44.06 ^{ab} ±0.645	43.05 ^{ab} ±0.367	40.08 ^{ab} ±0.923	47.08 ^{ab} ±0.689	45.03 ^{ab} ±0.256	43.8	-23%
	T2	53.43 ^{bc} ±0.947	54.05 ^{bc} ±0.656	55.51 ^{bc} ±3.145	62.08 ^{ab} ±0.635	52.05 ^{bc} ±1.785	54.84 ^{bc} ±2.738	61.37 ^{ab} ±0.945	50.03±0.667	52.05 ^{bc} ±1.234	51.01 ^{bc} ±0.123	54.6	-3%
	T3	60.0 ^{ab} ±0.147	58.05 ^{bc} ±0.645	60.04 ^{ab} ±1.243	65.07 ^{ab} ±0.673	59.09 ^{bc} ±0.385	61.03 ^{ab} ±0.956	65.05 ^{ab} ±0.973	57.07±0.778	62.02 ^{ab} ±0.334	63.06 ^{ab} ±1.648	61	7%
	T4	50.0 ^{ab} ±0.054	54.0 ^{bc} ±0.647	49.0 ^{ab} ±0.623	60.03 ^{ab} ±0.634	50.06 ^{bc} ±0.212	53.02 ^{ab} ±1.722	50.01 ^{ab} ±0.014	44.06±0.735	55.09 ^{ab} ±0.356	53.05 ^{ab} ±0.634	51.8	-9%
	T5	53.2 ^{bc} ±1.345	55.04 ^{ab} ±0.656	50.22 ^{ab} ±2.323	61.04 ^{ab} ±0.545	55.92 ^{ab} ±2.141	57.55 ^{ab} ±1.445	57.36 ^{ab} ±1.267	55.13 ^{ab} ±1.692	57.35 ^{ab} ±0.533	55.33 ^{ab} ±1.527	55.8	-2%
Spike number	C	12 ^{bc} ±1.231	12 ^{bc} ±1.000	13 ^{ab} ±1.563	11 ^{bc} ±1.534	13 ^{ab} ±1.843	11 ^{bc} ±0.456	12 ^{bc} ±1.157	11 ^{bc} ±1.000	15±0.468	12 ^{bc} ±0.111	13	
	T1	10±1.121	8±1.117	10±1.001	10±0.212	10±1.222	9±0.114	10±0.145	8±1.100	11±1.132	9±1.231	9	-30%
	T2	13 ^{bc} ±1.231	12±1.112	14 ^{bc} ±1.018	13 ^{bc} ±1.231	12±1.231	12±1.145	15 ^{ab} ±1.147	12±0.785	17±1.287	13 ^{bc} ±1.652	14	8%
	T3	16 ^{bc} ±1.241	14±1.163	15 ^{bc} ±1.264	14 ^{ab} ±1.235	14±0.232	13±0.112	17 ^{bc} ±1.126	13±1.192	19±1.135	15 ^{ab} ±1.26	15	15%
	T4	13 ^{ab} ±0.245	10±1.555	11±0.237	11 ^{bc} ±1.174	11±1.932	12 ^{bc} ±0.465	13 ^{ab} ±1.932	10±0.255	14±1.127	11 ^{bc} ±1.121	11	-15%
	T5	14 ^{ab} ±1.341	11±0.1682	12 ^{bc} ±1.248	12±0.1752	12±0.1.232	11±1.241	14±0.262	10±0.113	15±0.121	13 ^{ab} ±0.556	12	-8%
Spike length	C	10.00±0.634	11.01 ^{ab} ±0.61	12.02±0.675	10.01 ^{bc} ±0.646	10.53±0.328	11.55±0.359	11.05±0.628	11.03±0.617	11.05±0.684	11.51±0.127	11	
	T1	9.01 ^{bc} ±0.012	7.52±0.337	10.51±0.334	8.55±0.374	8.35±0.392	10.03±0.334	9.03 ^{bc} ±0.078	7.52±0.348	9.54±0.385	7.05±0.296	8.8	-20%
	T2	10.52 ^{ab} ±0.134	11.03 ^{bc} ±0.647	12.02 ^{ab} ±0.685	9.53±0.339	11.52 ^{bc} ±0.394	11.01 ^{ab} ±0.368	11.51 ^{bc} ±0.393	13.01±0.667	11.02 ^{ab} ±0.656	10.03 ^{ab} ±0.612	11.1	1%
	T3	12.56 ^{bc} ±0.334	13.65 ^{ab} ±0.354	14.57±0.334	11.56±0.358	12.50±0.597	12.65 ^{bc} ±0.339	12.85 ^{bc} ±0.397	14.01±0.645	12.50±0.667	12.55 ^{bc} ±0.487	12.8	16%
	T4	8.19±0.334	9.05±0.376	11.60±0.68	9.05±0.676	9.08±0.243	9.56±0.323	10.0±0.645	9.70±0.165	10.80 ^{bc} ±0.67	9.10±0.634	9.7	-11%
	T5	10.65 ^{ab} ±0.365	10.55 ^{ab} ±0.156	11.57±0.145	9.65±0.365	10.80 ^{bc} ±0.697	10.65 ^{ab} ±0.132	10.45 ^{ab} ±0.859	10.75±0.898	10.25 ^{ab} ±0.853	9.25±0.323	10.3	-6%
Spikelet Number	C	19±0.123	21 ^{ab} ±0.564	22 ^{ab} ±1.351	21 ^{ab} ±1.001	20±0.275	21 ^{ab} ±1.110	21 ^{ab} ±0.865	21 ^{ab} ±1.000	20 ^{ab} ±0.983	22±1.231	21	
	T1	17 ^{ab} ±1.345	16±0.1.183	18±1.362	14±1.351	15±0.1.964	18±1.374	15±0.1.963	15±0.1.341	17±0.1.432	14±1.753	16	-23%
	T2	20±1.532	23±0.386	21±1.532	21 ^{bc} ±1.324	21 ^{bc} ±0.125	21 ^{ab} ±0.452	21 ^{ab} ±0.654	21 ^{ab} ±0.863	21±0.832	21 ^{bc} ±1.632	21.1	1%
	T3	23 ^{ab} ±1.532	24±0.763	23 ^{ab} ±1.563	23 ^{ab} ±1.652	21 ^{bc} ±1.123	22 ^{ab} ±0.532	23 ^{ab} ±1.751	23 ^{ab} ±1.122	22±0.357	23 ^{ab} ±1.231	23	9%
	T4	21±1.121	19 ^{bc} ±1.113	20±0.1.432	19±0.324	18±1.134	20±0.998	20±0.843	20±0.872	19±0.1.412	20±0.989	19	-3%
	T5	21±1.112	20±0.342	21±0.453	20±0.342	20±0.897	21±0.945	21±0.545	20±0.947	19±1.646	21±0.234	20	-1%



Grain Number	C	170 [±] 3.234	210 [±] 3.743	230 [±] 3.267	180 [±] 3.652	125 [±] 5.735	175 [±] 3.964	155 [±] 3.523	186 [±] 3.654	180 [±] 3.578	155 [±] 3.735	177	
	T1	115 [±] 3.645	180 [±] 3.975	168 [±] 4.634	115 [±] 2.537	85 [±] 6.645	80 [±] 3.884	126 [±] 3.243	105 [±] 4.125	120 [±] 6.648	77 [±] 2.946	117	-34%
	T2	175 [±] 6.658	215 [±] 3.645	240 [±] 1.637	190 [±] 1.586	130 [±] 6.634	180 [±] 3.264	165 [±] 3.384	190 [±] 6.845	200 [±] 6.636	170 [±] 6.898	186	5%
	T3	181 [±] 1.554	225 [±] 3.765	260 [±] 3.735	210 [±] 3.454	135 [±] 3.839	203 [±] 4.658	180 [±] 6.656	203 [±] 3.675	220 [±] 6.763	195 [±] 3.443	201	14%
	T4	132 [±] 4.334	200 [±] 6.645	200 [±] 6.622	137 [±] 1.123	105 [±] 4.746	150 [±] 3.254	140 [±] 3.743	160 [±] 6.735	165 [±] 3.474	135 [±] 5.635	152	-14%
	T5	160 [±] 6.736	205 [±] 3.643	225 [±] 3.354	170 [±] 3.253	120 [±] 6.563	160 [±] 6.663	145 [±] 3.635	170 [±] 3.634	170 [±] 3.783	145 [±] 3.654	167	-5%
Thousand Grain Number	C	30.05 [±] 1.001	30.08 [±] 1.231	35.43 [±] 1.541	31.79 [±] 1.111	22.00 [±] 1.342	34.45 [±] 1.000	32.21 [±] 1.342	33.12 [±] 1.942	33.01 [±] 1.463	35.00 [±] 1.653	31.23	
	T1	23.34 [±] 1.323	19.14 [±] 1.545	25.31 [±] 1.434	26.51 [±] 0.454	18.00 [±] 1.223	29.45 [±] 1.453	25.01 [±] 1.367	20.41 [±] 0.764	22.00 [±] 0.453	21.19 [±] 0.345	23.21	-28%
	T2	34.41 [±] 0.357	33.17 [±] 2.563	38.31 [±] 1.232	35.11 [±] 1.453	25.91 [±] 1.543	36.61 [±] 0.764	34.51 [±] 1.367	35.75 [±] 0.879	35.19 [±] 1.443	36.82 [±] 0.987	34.05	8%
	T3	36.45 [±] 0.997	38.12 [±] 1.453	45.62 [±] 2.332	40.15 [±] 1.453	28.42 [±] 1.342	41.72 [±] 0.878	38.14 [±] 0.987	38.52 [±] 1.453	43.14 [±] 1.756	40.83 [±] 1.675	38.39	21%
	T4	26.14 [±] 0.764	24.32 [±] 1.564	30.32 [±] 1.654	28.15 [±] 0.997	20.11 [±] 1.656	31.62 [±] 1.443	29.33 [±] 1.768	27.91 [±] 0.765	28.11 [±] 1.757	27.01 [±] 1.222	27.24	-15%
	T5	29.21 [±] 1.543	27.43 [±] 1.651	33.05 [±] 1.123	30.22 [±] 1.334	22.02 [±] 0.976	33.08 [±] 1.887	30.01 [±] 1.445	30.12 [±] 1.234	30.12 [±] 1.456	31.34 [±] 1.532	29.59	-7%
Total protein content	C	162 [±] 0.003	126 [±] 0.0002	129 [±] 0.002	134 [±] 0.004	135 [±] 0.002	146 [±] 0.001	151 [±] 0.002	150 [±] 0.001	119 [±] 0.001	172 [±] 0.003	142	
	T1	156 [±] 0.007	113 [±] 0.001	115 [±] 0.001	73 [±] 0.002	98 [±] 0.001	141 [±] 0.002	125 [±] 0.002	120 [±] 0.003	102 [±] 0.003	111 [±] 0.003	115	-19%
	T2	176 [±] 0.008	167 [±] 0.002	158 [±] 0.005	166 [±] 0.001	165 [±] 0.001	167 [±] 0.004	158 [±] 0.003	151 [±] 0.015	180 [±] 0.002	184 [±] 0.011	167	18%
	T3	188 [±] 0.009	168 [±] 0.003	164 [±] 0.001	168 [±] 0.001	175 [±] 0.004	173 [±] 0.001	190 [±] 0.007	152 [±] 0.001	199 [±] 0.009	209 [±] 0.005	178	25%
	T4	172 [±] 0.006	126 [±] 0.005	122 [±] 0.001	101 [±] 0.000	132 [±] 0.001	164 [±] 0.002	146 [±] 0.001	130 [±] 0.003	148 [±] 0.002	122 [±] 0.001	136	-4%
	T5	174 [±] 0.005	157 [±] 0.002	134 [±] 0.003	162 [±] 0.005	167 [±] 0.001	171 [±] 0.002	153 [±] 0.004	131 [±] 0.002	156 [±] 0.004	129 [±] 0.011	153	8%
Peroxidase activity	C	0.44 [±] 0.06	0.48 [±] 0.02	0.40 [±] 0.02	0.45 [±] 0.05	0.51 [±] 0.04	0.39 [±] 0.04	0.45 [±] 0.06	0.39 [±] 0.01	0.50 [±] 0.05	0.26 [±] 0.00	0.43	
	T1	0.829 [±] 0.06	0.814 [±] 0.03	1.062 [±] 0.04	1.55 [±] 0.14	1.27 [±] 0.03	1.00 [±] 0.01	1.14 [±] 0.05	0.77 [±] 0.02	1.23 [±] 0.03	1.11 [±] 0.05	1.08	151%
	T2	0.38 [±] 0.03	0.35 [±] 0.02	0.24 [±] 0.01	0.28 [±] 0.02	0.33 [±] 0.02	0.35 [±] 0.02	0.21 [±] 0.01	0.24 [±] 0.02	0.20 [±] 0.01	0.15 [±] 0.03	0.28	-35%
	T3	0.21 [±] 0.02	0.21 [±] 0.01	0.18 [±] 0.02	0.26 [±] 0.00	0.22 [±] 0.02	0.21 [±] 0.01	0.21 [±] 0.01	0.21 [±] 0.03	0.11 [±] 0.00	0.13 [±] 0.01	0.2	-54%
	T4	0.68 [±] 0.01	0.47 [±] 0.02	0.82 [±] 0.03	0.84 [±] 0.06	0.63 [±] 0.18	0.48 [±] 0.02	0.65 [±] 0.01	0.63 [±] 0.03	0.57 [±] 0.03	0.85 [±] 0.05	0.67	55%
	T5	0.47 [±] 0.06	0.42 [±] 0.00	0.47 [±] 0.05	0.38 [±] 0.03	0.48 [±] 0.05	0.35 [±] 0.03	0.48 [±] 0.04	0.51 [±] 0.04	0.41 [±] 0.02	0.71 [±] 0.05	0.47	10%
Catalase activity	C	3.84 [±] 0.18	3.81 [±] 0.21	5.34 [±] 0.62	5.80 [±] 0.31	5.23 [±] 0.69	6.32 [±] 0.26	4.32 [±] 0.41	4.92 [±] 0.24	6.53 [±] 0.22	4.05 [±] 0.24	5.022	



	T1	6.38±0.35	8.48 ^{ab} ±0.29	7.16 ^{cd} ±0.36	7.18±0.42	9.38 ^{ab} ±0.32	8.41 ^{de} ±0.16	7.40 ^{cd} ±0.72	9.49 ^{ab} ±0.28	8.52 ^{bc} ±0.06	17.69 ^{ab} ±0.09	9,613	91%
	T2	3.83 ^{bcd} ±0.24	3.18±0.08	3.43±0.19	4.46 ^{abc} ±0.30	5.24±0.44	4.51 ^{ab} ±0.21	3.66 ^{cd} ±0.19	3.60 ^{bcd} ±0.26	3.28±0.34	3.55 ^{ab} ±0.30	3,878	-23%
	T3	2.68±0.23	3.48±0.21	3.03±0.40	3.31±0.17	3.36±0.32	3.81±0.55	2.54±0.15	2.45±0.21	2.69±0.13	2.63±0.11	3,003	-40%
	T4	4.92 ^{bc} ±0.41	8.25±0.38	6.43 ^b ±0.75	8.47 ^{ab} ±0.09	6.36 ^b ±0.07	6.26 ^b ±0.80	5.39 ^{ab} ±0.10	6.34 ^b ±0.20	5.61 ^b ±0.10	8.49 ^{ab} ±0.15	6,656	33%
	T5	3.96±0.011	6.05 ^{bc} ±0.69	5.69 ^{cd} ±0.14	6.89 ^{ab} ±0.24	5.77 ^{bcd} ±0.05	6.57 ^{abc} ±0.12	4.83 ^{de} ±0.28	5.77 ^{bcd} ±0.30	4.83 ^{abc} ±0.19	6.58 ^{bc} ±0.65	5,698	13%
Proline content	C	1.36 ^{ab} ±0.002	0.97±0.141	0.95±0.033	1.12 ^{de} ±0.032	1.11 ^{de} ±0.113	1.07 ^{de} ±0.062	1.39 ^{bc} ±0.053	1.29 ^{cd} ±0.094	1.58 ^b ±0.133	1.81±0.204	1,26	
	T1	2.72±0.044	2.00±0.015	2.02±0.033	1.99±0.02	2.64±0.064	2.44 ^{ab} ±0.065	2.89±0.096	3.02 ^b ±0.074	3.21 ^a ±0.056	2.95 ^{bc} ±0.054	2,59	105%
	T2	0.71±0.024	0.98±0.025	0.99±0.044	1.18±0.054	0.95±0.033	1.33 ^b ±0.012	1.36±0.084	1.20 ^b ±0.015	0.94 ^{ab} ±0.013	0.98±0.055	1,06	-16%
	T3	0.93 ^{ab} ±0.034	0.91 ^b ±0.015	0.89±0.044	0.90±0.056	0.90±0.015	1.03 ^{bc} ±0.033	1.03±0.035	1.03±0.033	1.00±0.012	1.00±0.055	0,96	-24%
	T4	1.27 ^{bcd} ±0.044	1.13±0.085	1.30 ^{bcd} ±0.043	1.23 ^{bcd} ±0.014	1.21 ^{cd} ±0.043	1.24 ^{bcd} ±0.025	1.71±0.213	1.25 ^{bcd} ±0.055	1.42 ^b ±0.073	1.34 ^{bc} ±0.052	1,31	4%
	T5	1.31 ^{cd} ±0.025	1.25 ^{cd} ±0.013	1.09 ^{de} ±0.025	1.15±0.073	1.04±0.022	1.04±0.014	1.18±0.035	1.14 ^{cd} ±0.026	1.39±0.026	1.30±0.013	1,19	-6%
Trehalose content	C	0.286 ^{bc} ±0.013	0.300 ^{abc} ±0.032	0.344 ^{abc} ±0.002	0.265±0.011	0.308 ^{bc} ±0.032	0.366 ^{abc} ±0.003	0.267 ^{bc} ±0.064	0.267 ^{bc} ±0.005	0.389±0.013	0.334 ^{abcd} ±0.001	0,313	
	T1	0.717±0.024	0.781 ^{ab} ±0.022	0.537±0.002	0.731 ^{bc} ±0.034	0.732 ^{bc} ±0.032	0.822 ^{bc} ±0.024	0.755±0.042	0.755±0.034	0.790 ^{abc} ±0.022	0.779 ^{bc} ±0.014	0,74	137%
	T2	0.164±0.014	0.139±0.003	0.233±0.002	0.203±0.005	0.208±0.016	0.245±0.007	0.226±0.014	0.225±0.004	0.233±0.003	0.208 ^{ab} ±0.003	0,208	-33%
	T3	0.152 ^{ab} ±0.015	0.082±0.024	0.132±0.005	0.180 ^{ab} ±0.006	0.161±0.024	0.190 ^{ab} ±0.013	0.148 ^{ab} ±0.0026	0.148 ^{ab} ±0.004	0.153 ^{ab} ±0.006	0.175 ^{ab} ±0.024	0,152	-51%
	T4	0.693 ^{abc} ±0.06	0.624±0.014	0.659±0.005	0.618±0.003	0.656 ^{bc} ±0.025	0.729 ^{bc} ±0.026	0.639±0.004	0.654±0.003	0.622±0.044	0.722 ^{ab} ±0.026	0,662	112%
	T5	0.343±0.025	0.384 ^{cd} ±0.014	0.404 ^{cd} ±0.006	0.385±0.004	0.375±0.013	0.417 ^{de} ±0.005	0.407±0.003	0.407±0.015	0.318±0.002	0.520 ^{cd} ±0.003	0,398	27%
Malondialdehyde content	C	1.47 ^{bc} ±0.465	1.40 ^{bc} ±0.156	1.39 ^{bc} ±0.256	0.80±0.078	0.72±0.076	0.86±0.056	1.80±0.077	1.39 ^{ab} ±0.256	1.32±0.278	1.71±0.087	1,22	
	T1	2.89±0.145	4.77±0.376	1.57±0.187	2.53 ^{bc} ±0.195	2.95 ^{bc} ±0.344	4.34 ^{cd} ±0.734	4.12 ^{abc} ±0.257	4.58±0.375	3.42±0.375	3.50 ^{bc} ±0.043	3,53	188%
	T2	1.11±0.065	1.37 ^{ab} ±0.134	1.49±0.123	1.07±0.056	1.11 ^b ±0.066	1.15±0.034	1.29±0.044	1.06±0.123	1.21 ^{ab} ±0.129	1.31±0.043	1,21	-0.09%
	T3	0.91 ^{ab} ±0.045	0.83 ^{ab} ±0.086	1.02±0.166	0.60±0.078	0.91 ^{bc} ±0.023	0.69 ^{ab} ±0.029	0.92 ^{ab} ±0.065	0.95±0.056	0.99±0.097	1.31±0.044	0,95	-22%
	T4	2.69 ^{bc} ±0.056	1.76±0.146	1.77±0.156	1.93 ^{bcd} ±0.422	1.81 ^{abc} ±0.034	2.60 ^{cd} ±0.156	2.04 ^{bcd} ±0.167	2.89±0.455	2.25 ^{bcd} ±0.087	1.31±0.045	2,24	83%
	T5	1.67 ^{bc} ±0.244	1.62 ^{bc} ±0.287	1.68 ^{bc} ±0.165	1.32 ^{bc} ±0.157	1.42 ^{bc} ±0.276	1.73 ^{bc} ±0.247	1.72 ^{bc} ±0.242	1.76±0.056	1.85 ^{bc} ±0.354	1.31±0.046	1,62	32%
Mean productivity (MP)	T1	41	39	48	44	31	48	45	43	44	45	42,8	
	T2	51	50	57	53	38	53	51	52	53	54	51,2	



	T3	53	57	67	60	42	61	51	57	64	60	57,2	
	T4	43	42	50	45	32	49	47	47	47	49	45,1	
	T5	44	43	52	46	33	50	47	48	48	50	46,1	
Yield stability index (YSI)	T1	0,75	0,62	0,71	0,82	0,83	0,85	0,78	0,59	0,67	0,6	0,722	
	T2	1,13	1,1	1,09	1,14	1,15	1,05	1,06	1,05	1,06	1,03	1,086	
	T3	1,19	1,27	1,28	1,28	1,29	1,21	1,05	1,14	1,29	1,13	1,213	
	T4	0,85	0,8	0,86	0,89	0,92	0,9	0,91	0,8	0,84	0,79	0,856	
	T5	0,93	0,89	0,94	0,98	1	0,97	0,94	0,9	0,91	0,88	0,934	
Stress susceptibility index (SSI)	T1	0,96	1,46	1,11	0,69	0,66	0,56	0,85	1,59	1,29	1,57	1,074	
	T2	1,38	1,03	0,89	1,43	1,59	0,52	0,67	0,47	0,63	0,3	0,891	
	T3	0,83	1,21	1,24	1,24	1,29	0,91	0,23	0,64	1,3	0,59	0,948	
	T4	1,16	1,55	1,11	0,83	0,6	0,76	0,73	1,56	1,25	1,62	1,117	
	T5	1,03	1,72	0,89	0,33	0,25	0,43	0,97	1,56	1,41	1,92	1,051	
Yield index (YI)	T1	0,98	0,81	1,09	1,11	0,78	1,26	1,09	0,86	0,96	0,91	0,985	
	T2	1	0,97	1,12	1,04	0,74	1,05	1	1,03	1,03	1,06	1,004	
	T3	0,94	1,01	1,18	1,04	0,74	1,08	0,89	1,01	1,12	1,04	1,005	
	T4	0,94	0,89	1,11	1,02	0,74	1,13	1,07	0,99	1,02	1,02	0,993	
	T5	0,97	0,92	1,14	1,05	0,75	1,14	1,03	1,03	1,03	1,06	1,012	