

Original Research

Quantifying the Generated and Percolated Leachate through a Landfill's Lining System in Gaza Strip, Palestine

Taher Abunama¹, Faridah Othman¹, Tamer Alslaibi², Motasem Abualqumboz³

¹Department of Civil Engineering, University of Malaya, 50603, Kuala Lumpur, Malaysia

²Department of Civil Engineering, University of Palestine, Gaza Strip, Palestine

³Department of Civil Engineering, University of Petronas, Perak, Malaysia

Received: 12 March 2017

Accepted: 15 May 2017

Abstract

Landfills are one of the main soil and groundwater pollution sources in Gaza Strip/Palestine. By addressing Deir Al Balah landfill, this study aims to quantify the generated and percolated leachate quantities through the landfill's lining system toward the groundwater aquifer. Leachate volumes have been quantified using two different approaches, namely the hydraulic evaluation of landfill performance (HELP) model and the water balance method (WBM), and then compared with the measured quantities by the landfill's management. Results of the HELP model showed that the average annual generated leachate volumes were 8,087 m³ from 1997 to 2014, while the average annual percolated leachate volumes were 717 m³, which represented 8.9% of the generated leachate amounts. However, WBM results for the average annual leachate during the same period were 7,568 m³. The landfill's leachate was mainly originated from the moisture content of the dumped wastes, whereas the rest came from the infiltration of the rainfall and re-circulated leachate. The cumulative modelled leachate amounts by HELP model and WBM were close, and with a difference percentage of 6.6%. However, both methods' results were higher than the measured leachate amounts. In conclusion, suitable mitigation measures are required to minimise the potential threats on to groundwater due to leachate percolation.

Keywords: landfill leachate, HELP model, water balance method (WBM), soil and groundwater pollution, Deir Al Balah landfill

Introduction

Waste landfilling is still the most dominant and viable method for waste disposal all over the world. Due to its economic advantages, it has been used for disposal of nearly all waste types, especially in developing countries.

As a consequence of the waste degradation process in landfills, highly polluted leachate and gases are produced in huge quantities, which may gradually be released to surrounding ecosystems.

Even the development of landfilling technologies from uncontrolled dumpsites to sanitary landfills still represents potential threats to the environment [1]. In recent decades, numerous studies have highlighted the associated social and environmental risks imposed by landfill leachate,

*e-mail: tabunama@hotmail.com

which is related to its highly contaminated pollutants and heavy metals and which can deteriorate the quality of the surrounding surface water bodies and groundwater aquifer [2]. Additionally, the unseparated municipal solid wastes (MSW) may include industrial, medical, and hazardous wastes; therefore, the released leachate tends to contain high toxic constituents and heavy metals [3].

In general, landfill leachate characteristics and volumes are highly varied, and mainly depend on several factors such as wastes composition and its moisture content, disposal method, landfill age, and climatological conditions. The high moisture content of the dumped wastes – especially in developing countries – results in high water storage in landfills, which enhances the accumulation of acids. As a consequence, the carbon-based substances in such acidic landfills tend to be decomposed to leachate rather than released as gases [4].

The evaluation of landfill leachate quality and quantities is essential for assessing its environmental impact, as well as for treatment and management purposes. The factors that influence the leachate production process vary in time and space, hence the evaluation process becomes more difficult and complex [1].

The first attempt to quantify the generated leachate amounts using a simplified water balance method (WBM) was introduced by many researchers, including El-Fadel et al. [5]. Based on the same concept of WBM, several mathematical models and equations have been developed in the last decades, which are varying in prediction complicity and accuracy.

Among them, the hydrologic evaluation of landfill performance (HELP) model is the most-used tool by engineers and designers. The HELP model was developed

to evaluate a landfill's hydrological performance [6], and it has been used in different studies recently [7-8]. For the sake of accuracy and verification purposes, other researchers used both the HELP model and WBM method in the same case study, such as Alslaibi et al. [9].

In the Gaza Strip, Deir Al Balah landfill exceeded its maximum capacity many years ago, and huge waste quantities are still being dumped. Therefore, it is crucial to quantify the generated and percolated leachate amounts into the soil layers toward the groundwater aquifer. Such a study can help the concerned authorities and researchers in further assessments and in applying suitable control and mitigation measures.

Study Area

Gaza Strip (GS) is located in the southwestern part of the Palestinian coastal plain along the Mediterranean Sea. Total area of GS is about 365 km², with a length of 41 km and width of about 6-12 km (Fig. 1). The strip's climate is considered semi-arid, where the average annual rainfall is around 342 mm. In 2007 the daily generated wastes from GS were more than 1,500 tons and it is projected to reach about 3,700 tons per day by 2040 [10].

As reported by Alqader et al. [11], the main fraction of GS MSW composition is organic matter (52%), while the other components are paper (11%), metals (3%), glass (3%), and miscellaneous wastes (18%). However, the organic wastes range from 60-70%, according to other studies [10, 12-13].

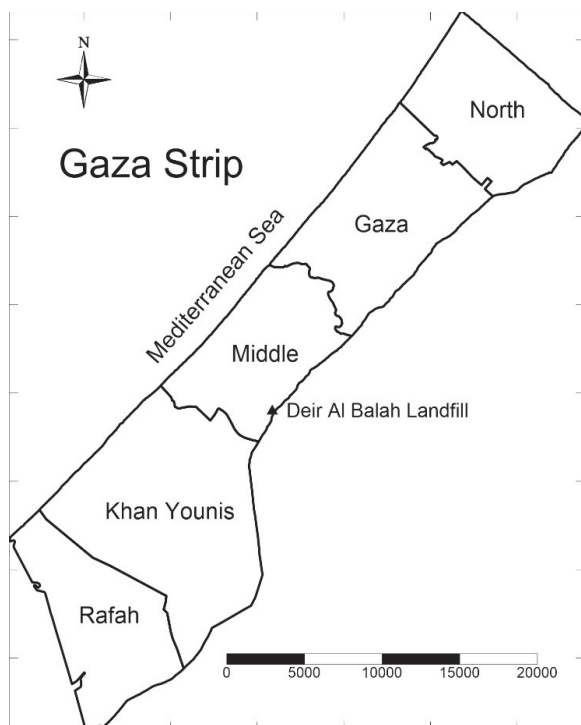


Fig. 1. Location of Deir Al Balah landfill in Gaza Strip.

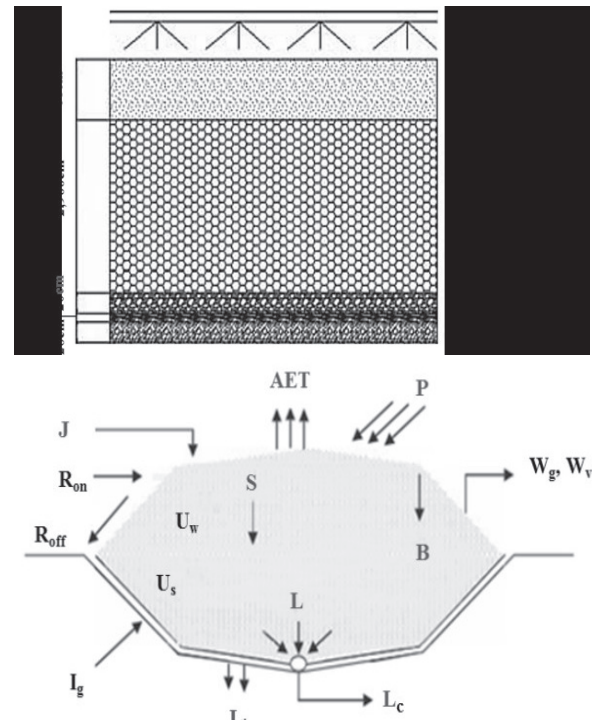


Fig. 2. Deir Al Balah landfill's lining system and typical water balance functional elements [14, 16].

Table 1. Summary of HELP model data entry [18].

Data Category	Parameter	Unit	Time step
Climate data	Precipitation	mm	Daily
	Solar radiation	MJ/m ²	Daily
	Temperature	°C	Daily
	Relative humidity	%	Seasonally
	Average wind speed	km/hr	10.92
	Maximum leaf area index	-	3.5
	Evaporation zone depth	cm	23.62
	Runoff curve number	-	81.3
Landfill design data and layers characteristics	Area	Hectares	6
	Leachate recycling ratio	%	40
	Layers thicknesses	cm	Table (2)
	Total porosity	vol./vol.	
	Field capacity	vol./vol.	
	Wilting point	vol./vol.	
	Moisture content	vol./vol.	
	Hydraulic conductivity	cm/sec	

This study is focused on Deir Al Balah landfill at the eastern border of the middle governorate of GS. The total area of the landfill is about 60,000 m² (400 m x 150 m) and with average height of 29 m. According to MDLF [10], the landfill receives around 100,000 tons of waste per year from 13 municipalities and villages in the Khan Younis and Middle governorates.

Deir Al Balah landfill has been in operation since 1997, and it includes a scale house, warehouse, screening plant, and two leachate ponds [14]. In addition, the landfill's lining system consists of five layers, namely (from the bottom) base: course, asphalt, aggregate, wastes, and clay cover (Fig. 2). The landfill's leachate is channeled to two leachate ponds through a gravity drainage system, and 40% of the collected leachate is re-circulated by spreading it on the top wastes.

Materials and Methods

Two different approaches were used to quantify the generated leachate from Deir Al Balah landfill, namely the HELP model and WBM. In both approaches, the available meteorological data from the nearest recording station were utilized, which included precipitation, evapotranspiration, temperature, and solar radiation, etc. In the following sections, the applied methodology in the two approaches and the required input data were listed:

HELP V3.07 Model

HELP is a quasi two-dimensional hydrological model of water movement to, through, and out of landfills [15]. It was developed by the U.S. Environmental Protection Agency (US EPA) in order to evaluate the hydrological performance of landfills in specific climatic conditions.

HELP applies different empirical and numerical equations in evaluating landfill leachate. For instance, runoff estimation is performed by the soil conservation service (SCS) curve number (CN) method, while evapotranspiration is computed by the modified Penman method. These processes and others are applied in a sequential order on a daily basis, starting with a surface water balance at the landfill's surface, followed by an estimation of evapotranspiration, and lastly, the drainage of leachate water through the landfill's layers [15].

In this study, the evaluation of Deir Al Balah landfill leachate was performed by HELP for an 18-year simulation period (1997-2014). The meteorological data included a daily set of precipitation, evapotranspiration, and temperature, while solar radiation was assigned seasonally. In addition, landfill design and operation parameters, such as landfill layers, slopes, final cover, and the dumped waste characteristics, are summarized in Tables 1 and 2.

WBM

WBM is a simple mathematical calculation between the water inputs and outputs of a landfill, which can be carried out by summing the water amounts that percolate to a landfill's body with the water content of the

Table 2. Layer types and typical properties.

Layer parameters	Unit	Layer 1	Layer 2	Layer 3	Layer 4	Layer 5
		Clay cover	Waste	Aggregate	Asphalt	Base course
Thickness	cm	60	2400	20	9	20
Total porosity	vol./vol.	0.437	0.671	0.37	0.427	0.37
Field capacity	vol./vol.	0.062	0.292	0.032	0.418	0.032
Wilting point	vol./vol.	0.024	0.077	0.013	0.367	0.013
Moisture content	vol./vol.	0.0835	0.294	0.033	0.427	0.033
Hydraulic conductivity	vol./vol.	5.8 x 10 ⁻²	10-3	0.3	1 x 10 ⁻⁷	0.3

dumped wastes, then abstracting the lost water by waste degradation, gas generation, etc. (Fig. 2) [16].

In this study, a number of assumptions were applied to derive and simplify the WBM equations. These assumptions were based on the landfill’s managers, including:

- The water entering the landfill is assumed to be only from rainfall, because the landfill is located far from any surface water bodies
- The landfill’s site topography is situated on a relatively high ground compared with the surrounding lands; therefore, the water amount entering from the surface runoff is assumed to be low and can be neglected ($R_{on}=0$)
- No water contribution is due to the raising of the aquifer table, which is about 40 m below the base of the landfill [13]
- The consumed water during waste biodegradation and gas formation is assumed to be insignificant

Therefore, water infiltration (I) from the landfill surface can be calculated by the following equation [17]:

$$I = P - E - R_{off} \tag{1}$$

...where I is the water amount entering the waste body (m^3), P is precipitation (m^3), E is evaporation (m^3), and R_{off} is the surface runoff from the landfill (m^3).

The percolated water to the landfill is subjected to be absorbed by the dumped wastes until reaching the landfill’s field capacity (FC), which can be defined as the maximum water quantities that can be held in the waste body against the pull of gravity. As a result, excess water leaches and moves toward the landfill’s sides and bottom.

The landfill’s leachate (L) movement is assumed to occur only under saturated conditions, when the infiltrated water and the dumped wastewater content surpasses the landfill’s field capacity, as illustrated by the following equation:

$$L = I + W_m - FC \tag{2}$$

...where W_m is the water content in the dumped wastes and FC is the landfill’s field capacity.

WBM calculations are illustrated in the following steps:

- Analyse the available meteorological data, including precipitation (P) and evaporation (E), etc.
- Calculate the surface runoff (R_{off}): $R_{off} = C_r \times P$, where C_r is the surface runoff coefficient.
- Calculate the water infiltration (I) to the landfill: $I_1 = P - E - R_{off}$.
- Calculate the actual water content ($Store_i$) inside the landfill due to rainfall and the water content of the dumped wastes: $Store_i = I_1 + W_m$.
- Calculate the landfill’s field capacity: $FC = DW \times FC\%$, where DW is the dry weight of the dumped wastes.
- Calculate the generated leachate: $L_1 = Store_i - FC$; if $Store_i > FC$, leachate can be formed; otherwise,

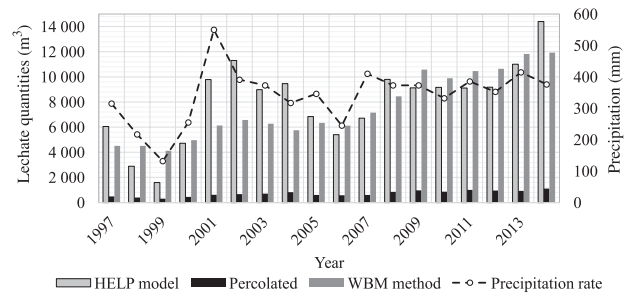


Fig. 3. Annual leachate generation and percolation through the landfill’s lining system versus annual precipitation rates.

a moisture deficit occurs and there is no leachate formation.

- Calculate the penetration portion (I_2) of the recirculated leachate ($RL = L_1 \times 40\%$): $I_2 = RL - E_2$ where E_2 is evaporation in volumes (m^3) throughout the year.
- Calculate the generated leachate with recirculation (L_2): $L_2 = Store_2 - FC$, where $Store_2$ is the sum of $Store_1$ and I_2 .

Results and Discussion

Leachate quantities were estimated by HELP model and WBM in the landfill from a period of 18 yrs. (1997-2014), and with a recycling ratio of 40%. Fig. 3 presents the annual rainfall rate versus the annual generated leachate by both methods, as well as the percolated leachate through the lining layers by the HELP model.

The average annual rates and volumes of the landfill hydrological water budget by the HELP model are illustrated in Table 3. Hence the average annual generated leachate amounts through 18 years were $8,087 m^3$, which represent about 39.4% of the total precipitation ($60,000 m^2 \times 342.1 mm$). Also, the average surface runoff portion was about 6.8% of the total precipitation, and it counted of $1,396 m^3 year^{-1}$.

However, evapotranspiration was the highest fraction in the landfill water budget, since the landfill is located in a semi-arid region. Evapotranspiration amounts reached approximately $11,042 m^3$ per year (53.8% of precipitation) through the study period (1997-2014). A close ratio was estimated by Alslaiibi [9], where the modelled

Table 3. Average annual rates and volumes of water budget components (HELP model).

Component	Avg. rate (mm)	Avg. volume (m^3)	Percentage (%)
Precipitation	342.1	20,525	100
Evapotranspiration	184.0	11,042	53.8
Runoff	23.3	1,396	6.8
Generated leachate	134.8	8,087	39.4

Table 4. Estimation of generated leachate volumes by WBM in Deir Al Balah landfill.

Year	W (ton)	CW (ton)	MC (m ³)	A*10 ³ (m ²)	P (mm)	E _i (mm)	R (mm)	I ₁ (mm)	Store ₁ (m ³)	FC (m ³)	Cum. L ₁ (m ³)	Cum. RL (m ³)	E ₂ (mm)	I ₂ (m ³)	Store ₂ (m ³)	Cum. L ₂ (m ³)
1997	77,000	77,000	15,400	35	315	221	54	41	16,833	12,320	4,513	1,805	428	0	16,833	4,513
1998	88,000	165,000	17,600	35	217	152	37	28	35,421	26,400	9,021	3,608	429	0	35,421	9,021
1999	88,000	253,000	17,600	35	132	92	22	17	53,621	40,480	13,141	5,256	409	0	53,621	13,141
2000	95,000	348,000	19,000	35	255	179	43	33	73,781	55,680	18,101	7,241	424	0	73,781	18,101
2001	90,700	438,700	18,140	35	550	385	94	72	94,424	70,192	24,232	9,693	428	0	94,424	24,232
2002	88,000	526,700	17,600	60	391	274	66	51	115,074	84,272	30,802	12,321	429	0	115,074	30,802
2003	84,000	610,700	16,800	60	373	261	63	48	134,783	97,712	37,071	14,828	409	0	134,783	37,071
2004	82,000	692,700	16,400	60	317	222	54	41	153,656	110,832	42,824	17,130	434	0	153,656	42,824
2005	91,000	783,700	18,200	60	346	242	59	45	174,555	125,392	49,163	19,665	431	0	174,555	49,163
2006	105,000	888,700	21,000	60	245	172	42	32	197,466	142,192	55,274	22,109	440	0	197,466	55,274
2007	99,000	987,700	19,800	60	410	287	70	53	220,464	158,032	62,432	24,973	440	0	220,464	62,432
2008	98,372	1,086,072	19,674	60	373	261	63	48	243,047	173,772	69,276	27,710	435	1,610	244,658	70,886
2009	101,103	1,187,175	20,221	60	373	261	63	48	266,177	189,948	76,229	30,492	421	5,232	271,409	81,461
2010	116,234	1,303,410	23,247	60	332	232	56	43	292,014	208,546	83,468	33,387	425	7,887	299,901	91,356
2011	133,030	1,436,439	26,606	60	386	270	66	50	321,627	229,830	91,796	36,719	445	10,019	331,645	101,815
2012	133,118	1,569,557	26,624	60	353	247	60	46	351,000	251,129	99,871	39,948	456	12,588	363,588	112,459
2013	143,273	1,712,829	28,655	60	415	290	70	54	382,887	274,053	108,835	43,534	468	15,454	398,341	124,288
2014	122,618	1,835,447	24,524	60	376	263	64	49	410,344	293,672	116,672	46,669	452	19,549	429,893	136,221

W: Annual total received waste by weight (ton); CW: Cumulative wastes (ton); MC: Wastes moisture content volumes, 20% of wastes mass and pH₂O is 1000 kg/m³ [value was obtained from the site]; A: Waste area (m²); P: precipitation (mm); E_i: Evaporation through rainy days (mm); R: Runoff (mm); I₁: Infiltration (mm); Store₁: Water amounts from infiltration plus waste moisture (m³); FC: Amount of water that can be held (Field Capacity based on dry weight) (m³); Cum. L₁: Cumulative leachate without recirculation (m³); Cum. RL: Cumulative recirculated leachate volumes (40% of Cum. L₁) (m³); E₂: Evaporation loss through the year (mm); I₂: Infiltration from recirculated leachate (Cum. RL-E₂) (m³); Store₂: Store₁ plus I₂ (m³); Cum. L₂: Cumulative leachate volumes with 40% recirculation (m³)

evapotranspiration volume was about 57.87% of rainfall in the period (1997-2007). In the end, the average percolated leachate through the final lining layer was 717 m³ year⁻¹, which represents 8.9% of the generated leachate.

On the other hand, WBM calculations of the produced leachate volumes with 40% as a recirculation ratio during the same period are illustrated in Table 4. The results of WBM showed that the average annual generated leachate were about 7,568 m³ (Fig. 2), for average annual dumped wastes of around of 101,969 tons. In addition, it revealed that the increase of annual dumped wastes leads to an increase of the annual generated leachate as a result of the high organic content in the dumped wastes, which represent about 60-70% [10, 12-13].

The landfill's leachate originated from three main sources: precipitation, recirculated leachate, and initial moisture content of the dumped wastes. About 53.9% of the leachate amounts originated from initial moisture content of the dumped wastes as estimated by WBM, whereas the remaining were derived from precipitation infiltration and recirculated leachate, with percentages of 31.8% and 14.4%, respectively.

According to the landfill managers, the measurement of leachate quantities started from 2001 due to the absence of leachate measurement tools. Fig. 4 presents the cumulative measured leachate quantities at the site versus the estimated values by both HELP and WBM. The cumulative leachate volumes as estimated by HELP and WBM at the end of study period were 145,564 m³ and 136,221 m³, respectively. While the measured cumulative volumes by Deir Al Balah landfill management were about 114,351 m³. In addition, the cumulative percolated leachate through the landfill lining system in 2014 were 12,912 m³.

F-test was used to compare the variances among the two methods' results and the actual measured values by site management from 2001 to 2011. Both HELP and WBM results showed a low difference in estimating leachate quantities, as represented by F-value of 0.86 and a relatively high P-value of 0.4.

However, the HELP model and WBM results showed relatively high variance rates compared with the measured leachate volumes of F-values equal to 1.58 and 1.85, and low P-values of 0.2 and 0.1, respectively. This variance between both methods and measured data refer to errors in the measured leachate volumes.

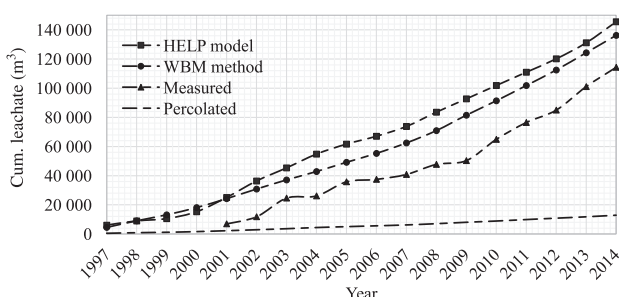


Fig. 4. Cumulative modelled and measured leachate volumes.

Moreover, the percentage difference test between the HELP model and WBM results of cumulative leachate amounts was 6.6%, while between measured values and the used methods (HELP model and WBM) they were 24% and 17.5%, respectively.

$$\text{Percentage difference} = \frac{| \text{HELP} - \text{WBM} |}{\frac{(\text{HELP} + \text{WBM})}{2}} * 100\% \quad (3)$$

In general, the cumulative leachate volumes by HELP indicated results close to WBM, while both methods estimated higher values than the measured leachate amounts at the landfill site (Fig. 4). These differences can be referred to the following points:

- HELP overestimates the generated leachate quantities as reported and established by different previous studies [7, 17]. Therefore, HELP estimations were higher than both WBM and measured leachate amounts.
- The high moisture content in the dumped wastes was the main contributor to the calculated leachate volumes [9].
- The absence of accurate tools for measuring leachate volumes and using primitive methods to quantify leachate volumes at the landfill's site led to an error in the measured leachate amounts. Such methods included: human observation and mathematical estimations of the leachate quantity in the leachate ponds, leachate recirculation rates, pumping hours, etc.
- Part of generated leachate was accumulated and percolated through the lining system into the underling soil layers. Thus the measured leachate amounts at the site were lower than the modelled results.

Conclusions

In this study, the HELP model and WBM method were applied to evaluate the generated and percolated leachate amounts to the soil layers from Deir Al Balah landfill in GS/Palestine, which was facing real challenges regarding protection of its crucial groundwater resource from leachate contamination.

Generally, the cumulative leachate results as estimated by HELP and WBM through the study period showed that close results were 145,564 m³ and 136,221 m³, respectively, and with a percentage difference of 6.6%. However, the cumulative measured leachate amounts at the landfill site were 114,351 m³, which were lower than the modelled amounts by HELP model and WBM by 24% and 17.5%, respectively.

Since the landfill is located in a semi-arid and developing region, about 53.9% of produced leachate originated from the intimal moisture contents of the refused wastes, and about 53.8% of precipitation was lost as evapotranspiration. Moreover, about 8.9% of the generated leachate was percolated through the landfill's

lining system toward the groundwater aquifer. Therefore, urgent intervention and mitigation measures should be applied to protect the groundwater aquifer.

Acknowledgements

The authors would like to acknowledge the University of Malaya research grant (FL001-13SUS) and the fundamental research grant by the Ministry of Higher Education (FP016-2014A) for financial support. We would like to thank UM Water Research Center for the support rendered to us. We are most grateful and would like to thank the reviewers for their valuable suggestions, which have led to substantial improvement of the article.

References

1. GRUGNALETTI M., PANTINI S., VERGINELLI I., LOMBARDI F. An easy-to-use tool for the evaluation of leachate production at landfill sites. *Waste management*, **2016**.
2. MOR S., RAVINDRA K., DAHIYA R.P., CHANDRA A. Leachate characterization and assessment of groundwater pollution near municipal solid waste landfill site. *Environmental monitoring and assessment*, **118** (1-3), 435, **2006**.
3. SINGH R.K., DATTA M., NEMA A.K. Review of groundwater contamination hazard rating systems for old landfills. *Waste management & research: the journal of the International Solid Wastes and Public Cleansing Association*, *ISWA*, **28** (2), 97, **2010**.
4. YANG N., DAMGAARDA., KJELDSSEN P., SHAO L., HE P. Quantification of regional leachate variance from municipal solid waste landfills in China. *Waste management*, **46**, 362, **2015**.
5. EL-FADEL M., FINDIKAKIS A.N., LECKIE J.O. Modeling leachate generation and transport in solid waste landfills. *Environmental technology*, **18** (7), 669, **1997**.
6. SCHROEDER P.R., MORGAN J.M., WALSKI T.M., GIBSON A.C. The hydrologic evaluation of landfill Performance (HELP) model, volume I, user's guide for version 1. Cincinnati, US EPA, **1984**.
7. BERGER K.U. On the current state of the Hydrologic Evaluation of Landfill Performance (HELP) model. *Waste management*, **38**, 201, **2015**.
8. ZHANG W., ZHANG G., CHEN Y. Analyses on a high leachate mound in a landfill of municipal solid waste in China. *Environmental Earth Sciences*, **70** (4), 1747, **2013**.
9. ALSLAIBI T.M., ABUSTAN I., MOGHEIR Y.K., AFIFI S. Quantification of leachate discharged to groundwater using the water balance method and the Hydrologic Evaluation of Landfill Performance (HELP) model. *Waste Management & Research*, **31** (1), 50, **2013**.
10. Municipal Development and Lending Fund (MDLF). Environmental and Social Impact Assessment (ESIA) for Gaza Solid Waste Management Project, Municipal Development and Lending Fund, Gaza, Palestine, **2012**.
11. ALQADER A.A., HAMAD J. Municipal solid waste composition determination supporting the integrated solid waste management in Gaza strip. *International Journal of Environmental Science and Development*, **3** (2), 172, **2012**.
12. JABER A., NASSAR A. Assessment of Solid Waste Dumpsites in Gaza Strip. Environment Quality Authority (EQA) and Japan International Cooperation Agency (JICA), Gaza Strip, **15**, **2007**.
13. United Nations of Development Program (UNDP). Feasibility Study and Detailed Design for Solid Waste Management in the Gaza Strip, **2012**.
14. German Technical Cooperation (GTZ). Annual report of solid waste management – Gaza middle area – Landfill design. Gaza Strip: Solid Waste Management Council, **2002**.
15. SCHROEDER P.R., AMMON D.C. The hydrologic evaluation of landfill performance (HELP) model: user's guide for version 3. Risk Reduction Engineering Laboratory, Office of Research and Development, US Environmental Protection Agency, **1994**.
16. JAGLOO K. Groundwater risk analysis in the vicinity of a landfill: A case study in Mauritius. Royal Inst. of Technology, **2002**.
17. ALSLAIBI T.M. Evaluating the impact of landfill leachate on groundwater aquifer in Gaza Strip using modeling approach. MSc thesis, The Islamic University, Gaza, Palestine, **2009**.
18. Palestinian Meteorological Office (PMO), Climate software data, Gaza, Palestine, **2014**.